

Figure 5: The pushbutton circuit avoids the necessity for software de-bouncing.

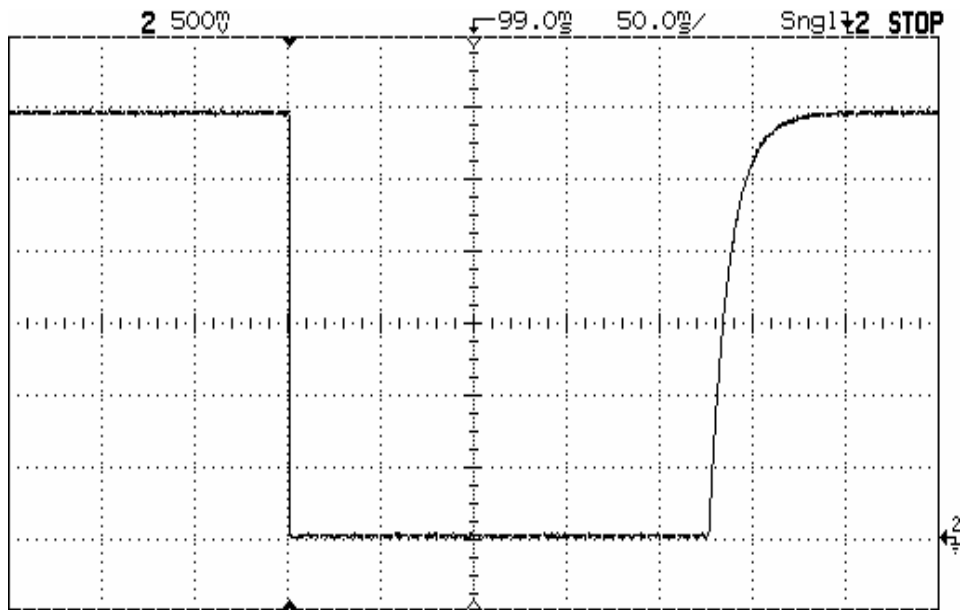


Figure 9: The de-bounced pushbutton input waveform

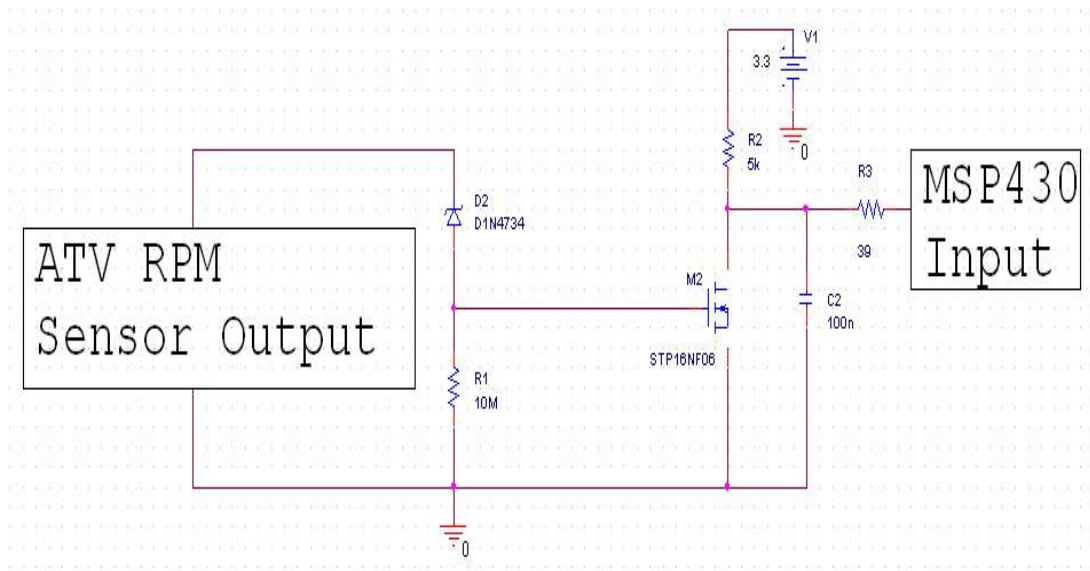


Figure 4: Input circuitry to the MSP430

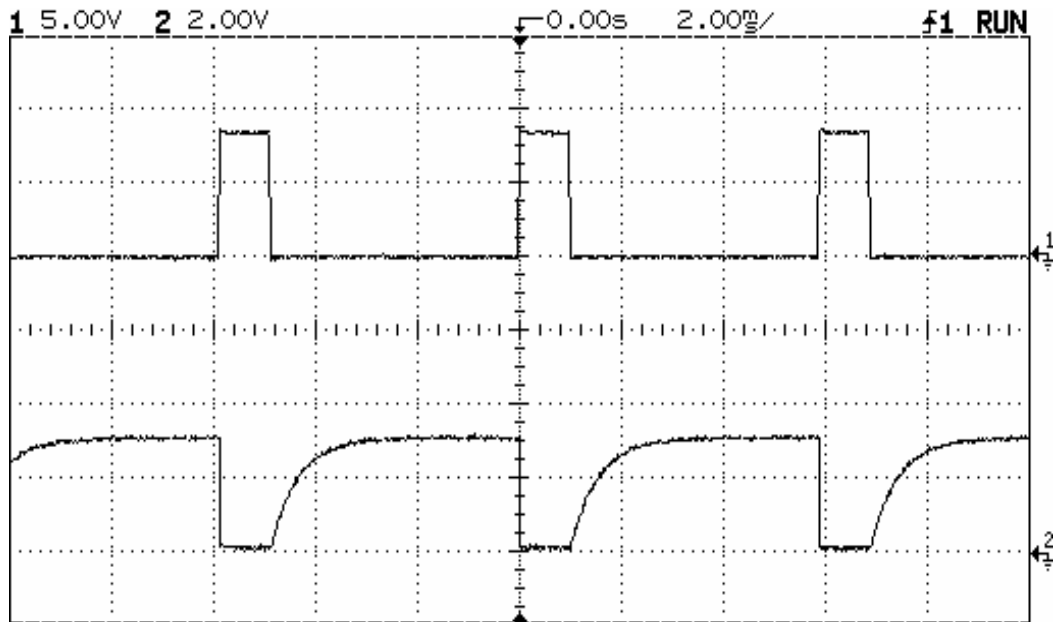


Figure 8: Input (probe 1) and output (probe 2) of the RPM circuit at 10,000 RPMs

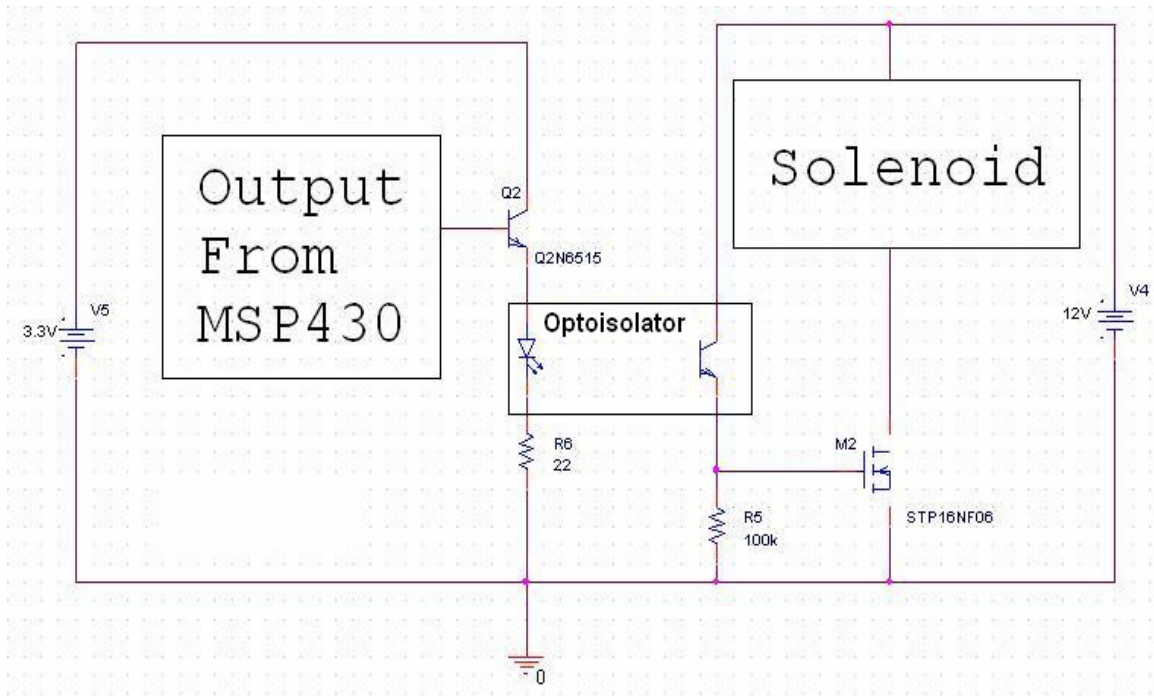


Figure 3: Output circuitry of the microcontroller

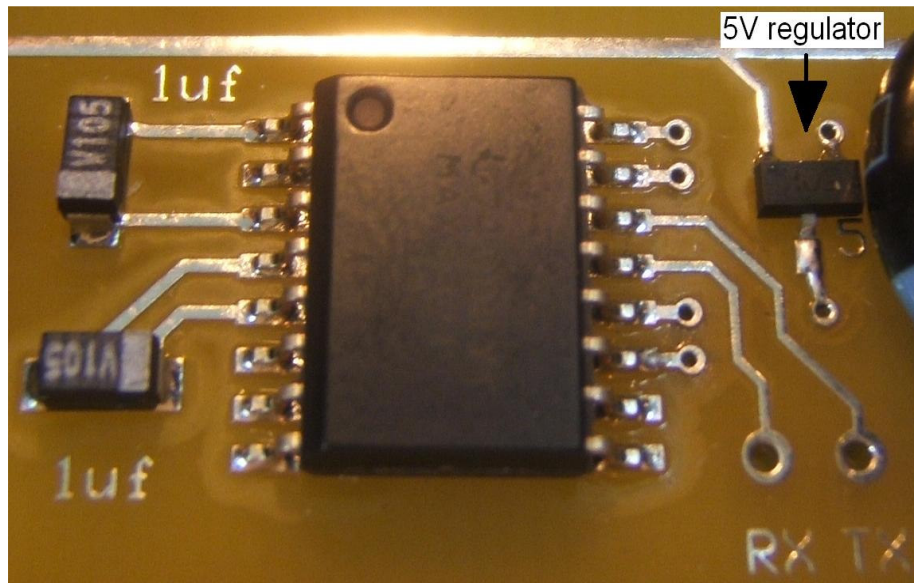


Figure 7: RS-232 serial communication driver

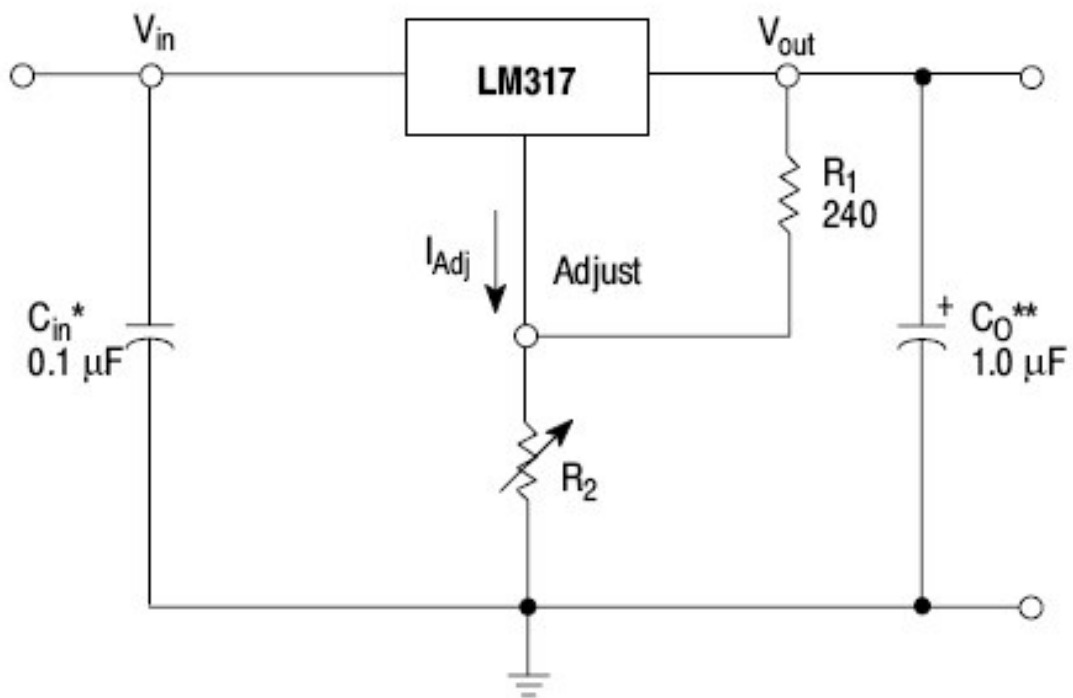


Figure 2: Voltage Regulator circuit