

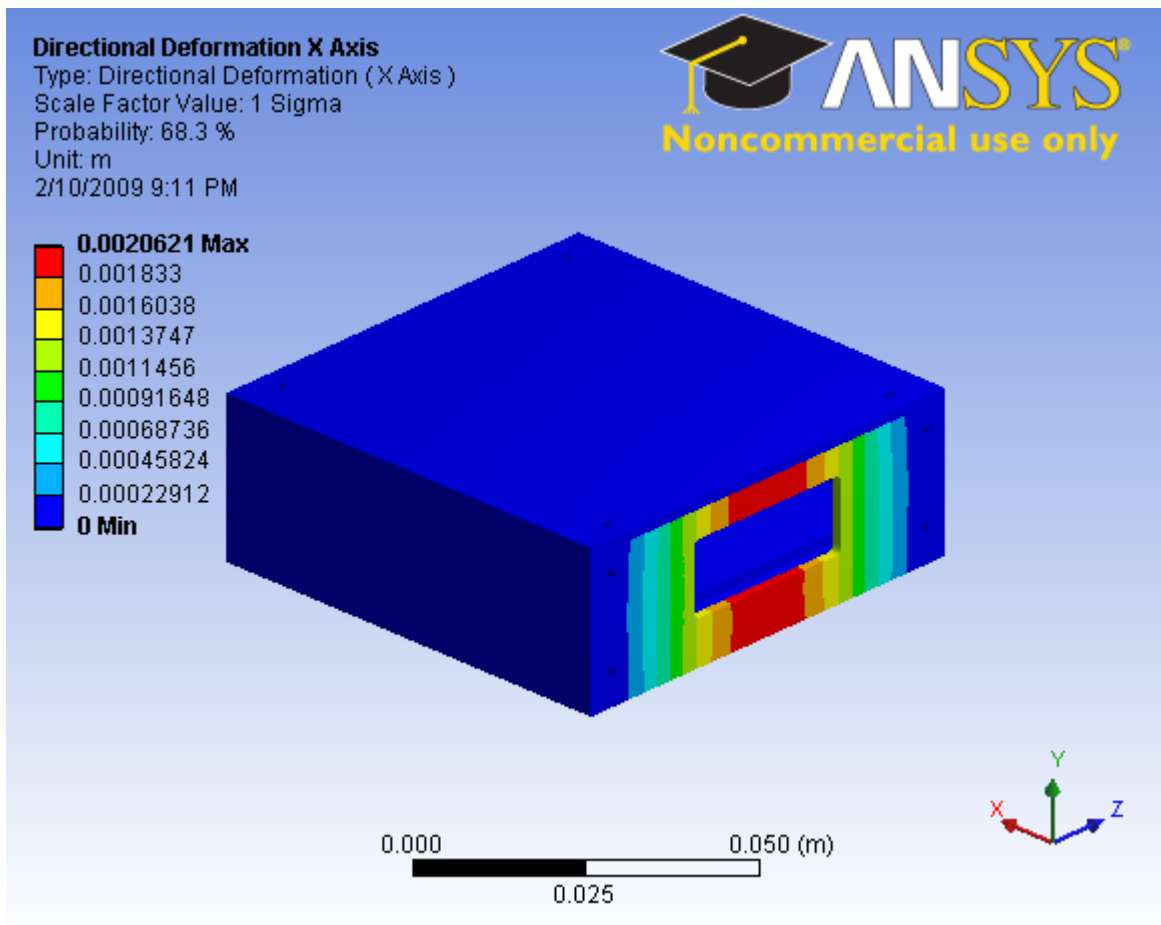
# Appendix 7:

---

## *Vibration Simulations*

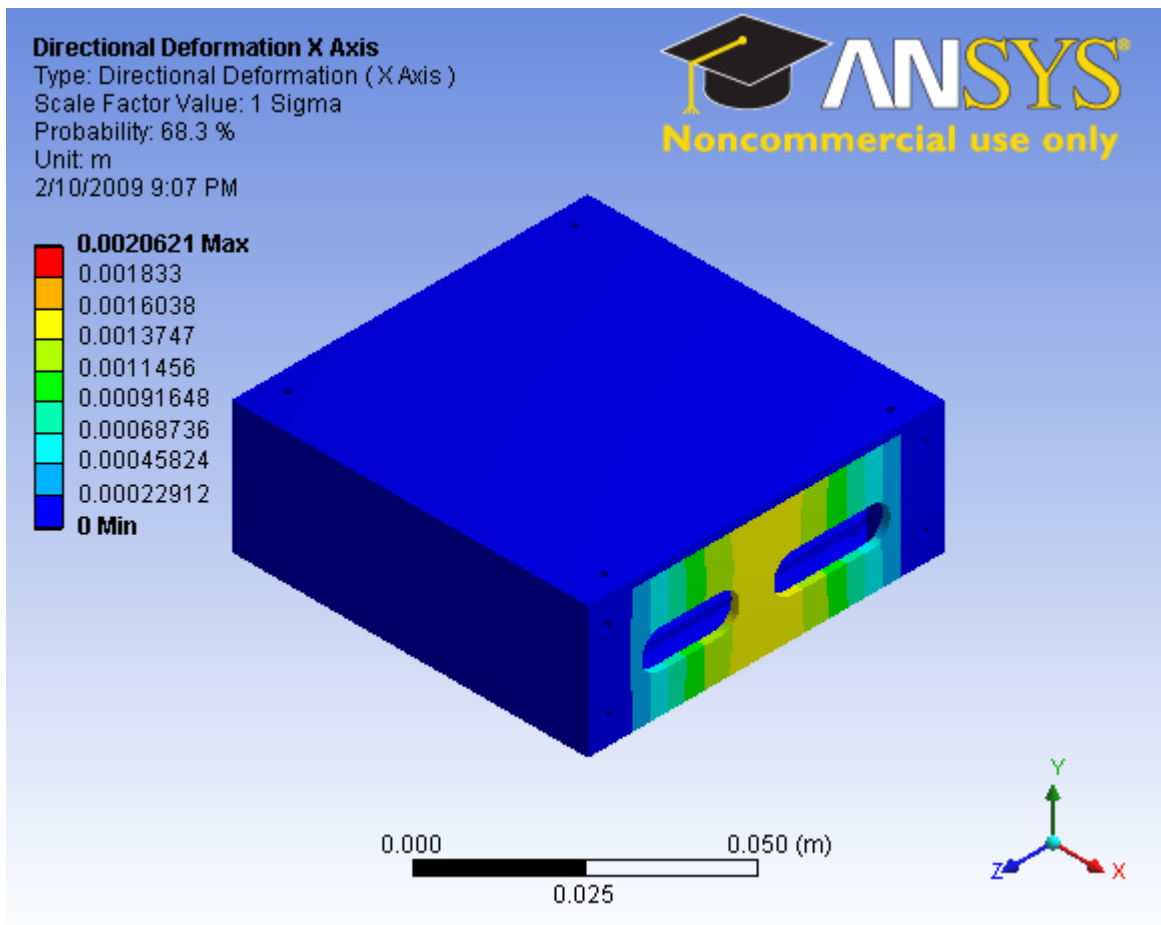
# Directional Deformation X Axis

**Project:** Vibrations Project  
**Subject:** Vibrations Simulation  
**Author:** Anthony J. Berwin  
**Prepared For:** Detailed Design Review  
**Date:** Sunday, February 08, 2009  
**Comments:** Random Vibration; Reference Temperature 25 degC  
Constant Damping Ratio: 2e-3; PSD 23.1 G Acceleration in X, Y and Z Axes



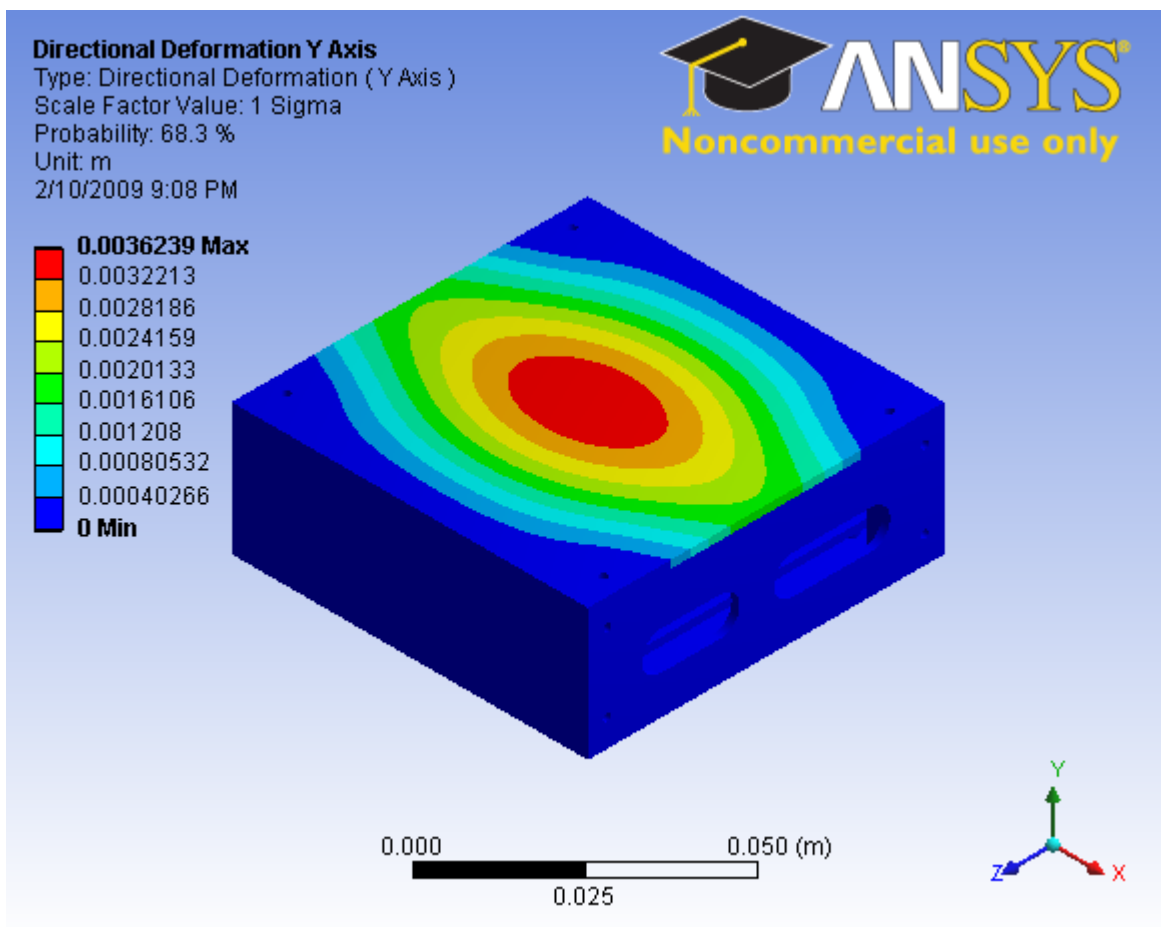
# Directional Deformation X Axis

**Project:** Vibrations Project  
**Subject:** Vibrations Simulation  
**Author:** Anthony J. Berwin  
**Prepared For:** Detailed Design Review  
**Date:** Sunday, February 08, 2009  
**Comments:** Random Vibration; Reference Temperature 25 degC  
Constant Damping Ratio: 2e-3; PSD 23.1 G Acceleration in X, Y and Z Axes



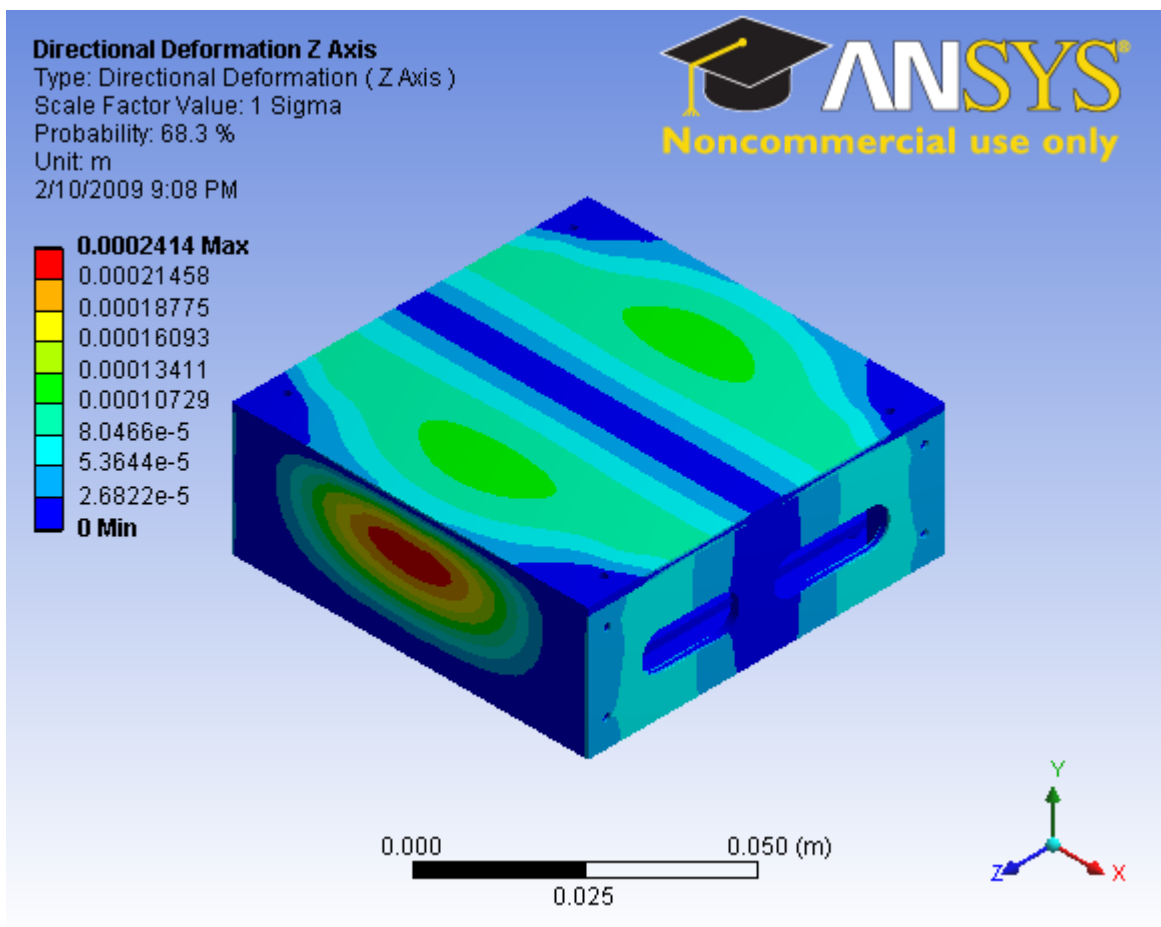
# Directional Deformation Y Axis

**Project:** Vibrations Project  
**Subject:** Vibrations Simulation  
**Author:** Anthony J. Berwin  
**Prepared For:** Detailed Design Review  
**Date:** Sunday, February 08, 2009  
**Comments:** Random Vibration; Reference Temperature 25 degC  
Constant Damping Ratio: 2e-3; PSD 23.1 G Acceleration in X, Y and Z Axes



# Directional Deformation Z Axis

**Project:** Vibrations Project  
**Subject:** Vibrations Simulation  
**Author:** Anthony J. Berwin  
**Prepared For:** Detailed Design Review  
**Date:** Sunday, February 08, 2009  
**Comments:** Random Vibration; Reference Temperature 25 degC  
Constant Damping Ratio: 2e-3; PSD 23.1 G Acceleration in X, Y and Z Axes



# Equivalent Stress

**Project:** Vibrations Project  
**Subject:** Vibrations Simulation  
**Author:** Anthony J. Berwin  
**Prepared For:** Detailed Design Review  
**Date:** Sunday, February 08, 2009  
**Comments:** Random Vibration; Reference Temperature 25 degC  
Constant Damping Ratio: 2e-3; PSD 23.1 G Acceleration in X, Y and Z Axes

