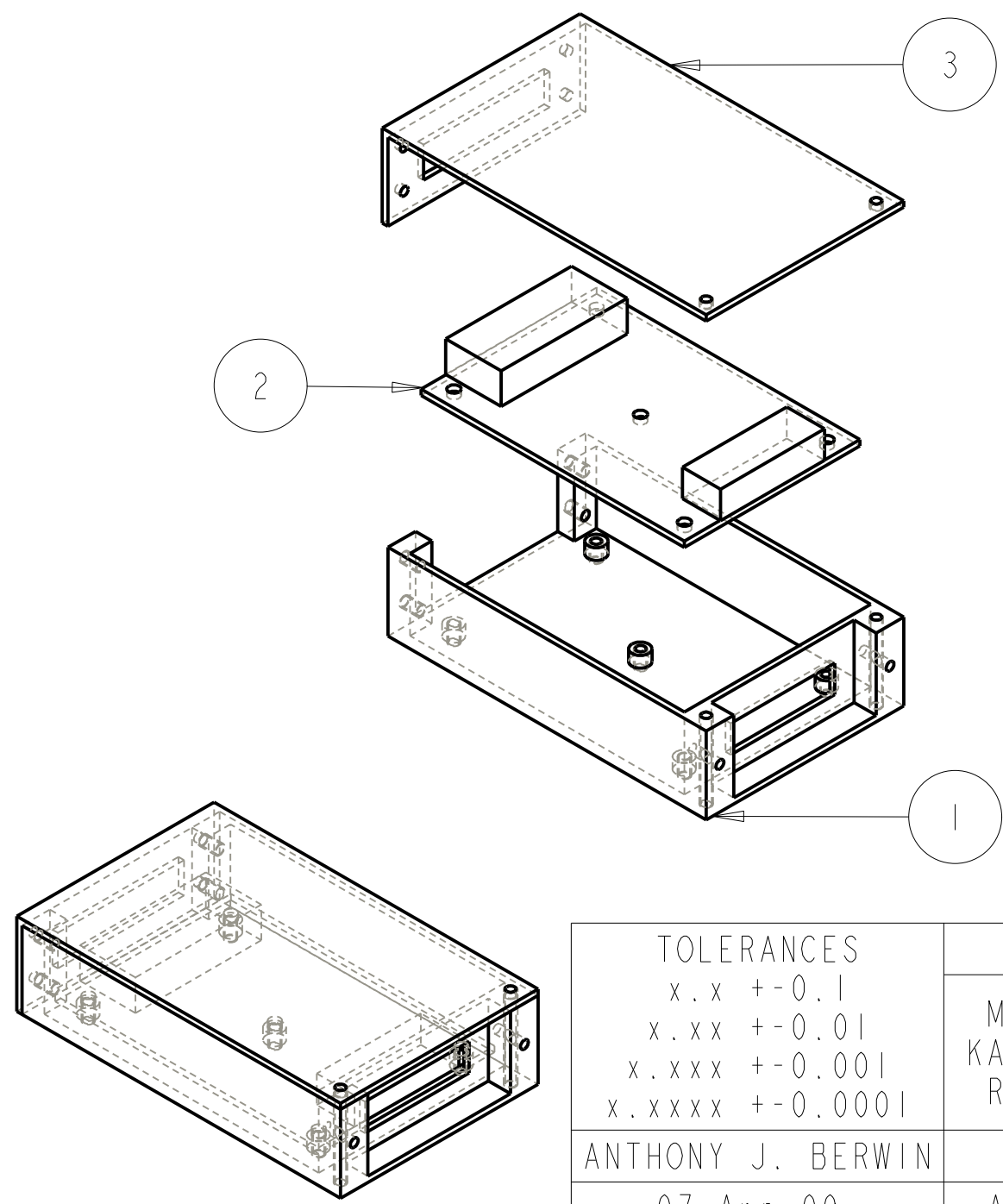


TOLERANCES	
x.x	+/-0.1
x.xx	+/-0.01
x.xxx	+/-0.001
x.xxxx	+/-0.0001
ANTHONY J. BERWIN	
07-Apr-09	

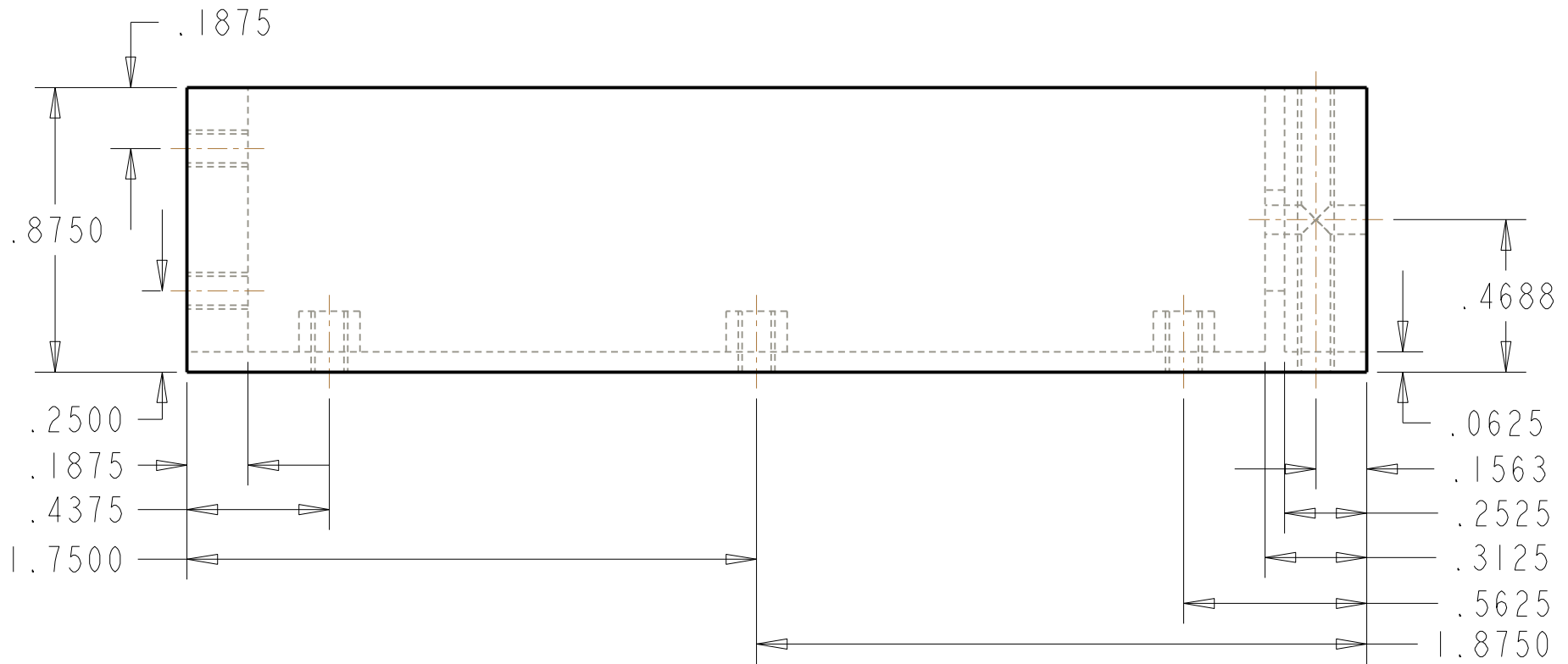
ENCLOSURE_A		
MECHANICAL ENGINEERING DEPARTMENT KATE GLEASON COLLEGE OF ENGINEERING ROCHESTER INSTITUTE OF TECHNOLOGY		
1.00:1	ENCLOSURE_A	B
ALUMINUM	SHEET 1 OF 2	A

PARTS LIST	
INDEX	PART
1	BOTTOM_A
2	PCB_A
3	TOP_A

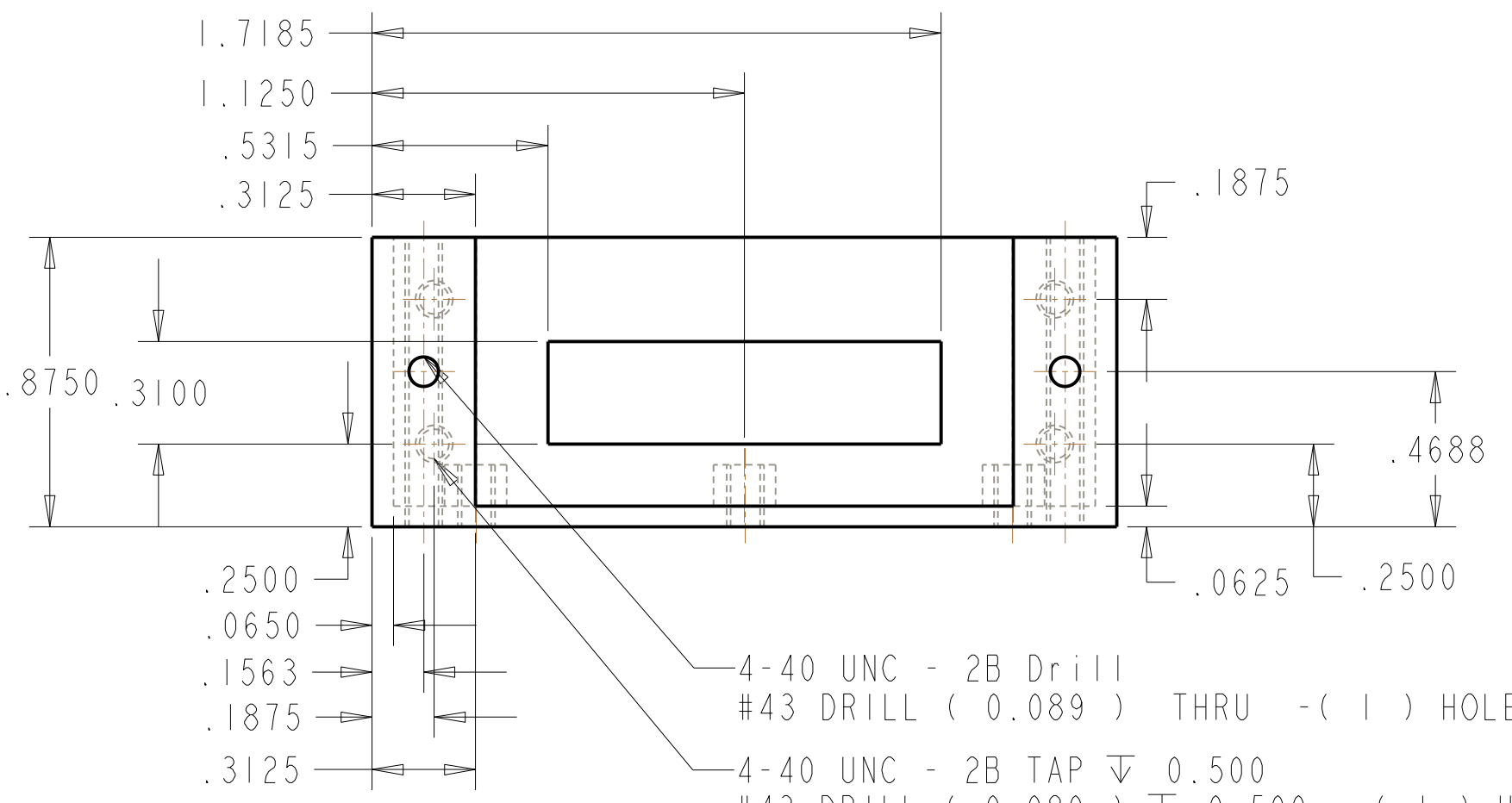


TOLERANCES	
x . x	+ - 0 . 1
x . x x	+ - 0 . 01
x . x x x	+ - 0 . 001
x . x x x x	+ - 0 . 0001
ANTHONY J. BERWIN	
07-Apr-09	

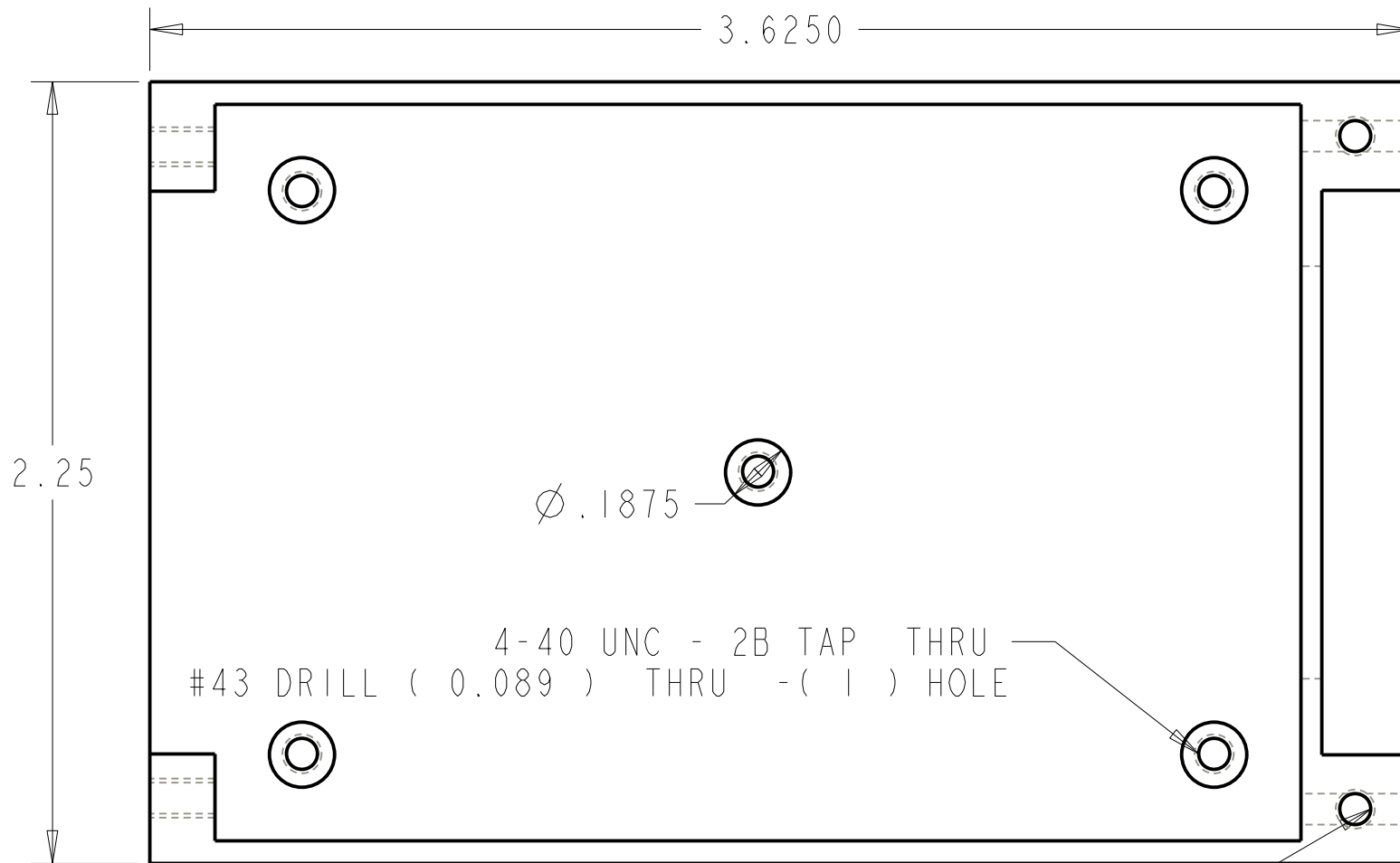
ENCLOSURE_A		
MECHANICAL ENGINEERING DEPARTMENT KATE GLEASON COLLEGE OF ENGINEERING ROCHESTER INSTITUTE OF TECHNOLOGY		
0.75:1	ENCLOSURE_A	B
ALUMINUM	SHEET 2 OF 2	A



TOLERANCES x . x +/- 0.1 x . x x +/- 0.01 x . x x x +/- 0.001 x . x x x x +/- 0.0001	BOTTOM_A		
	MECHANICAL ENGINEERING DEPARTMENT KATE GLEASON COLLEGE OF ENGINEERING ROCHESTER INSTITUTE OF TECHNOLOGY		
ANTHONY J. BERWIN	2.00:1	BOTTOM_A	B
07-Apr-09	ALUMINUM	SHEET 1 OF 4	A



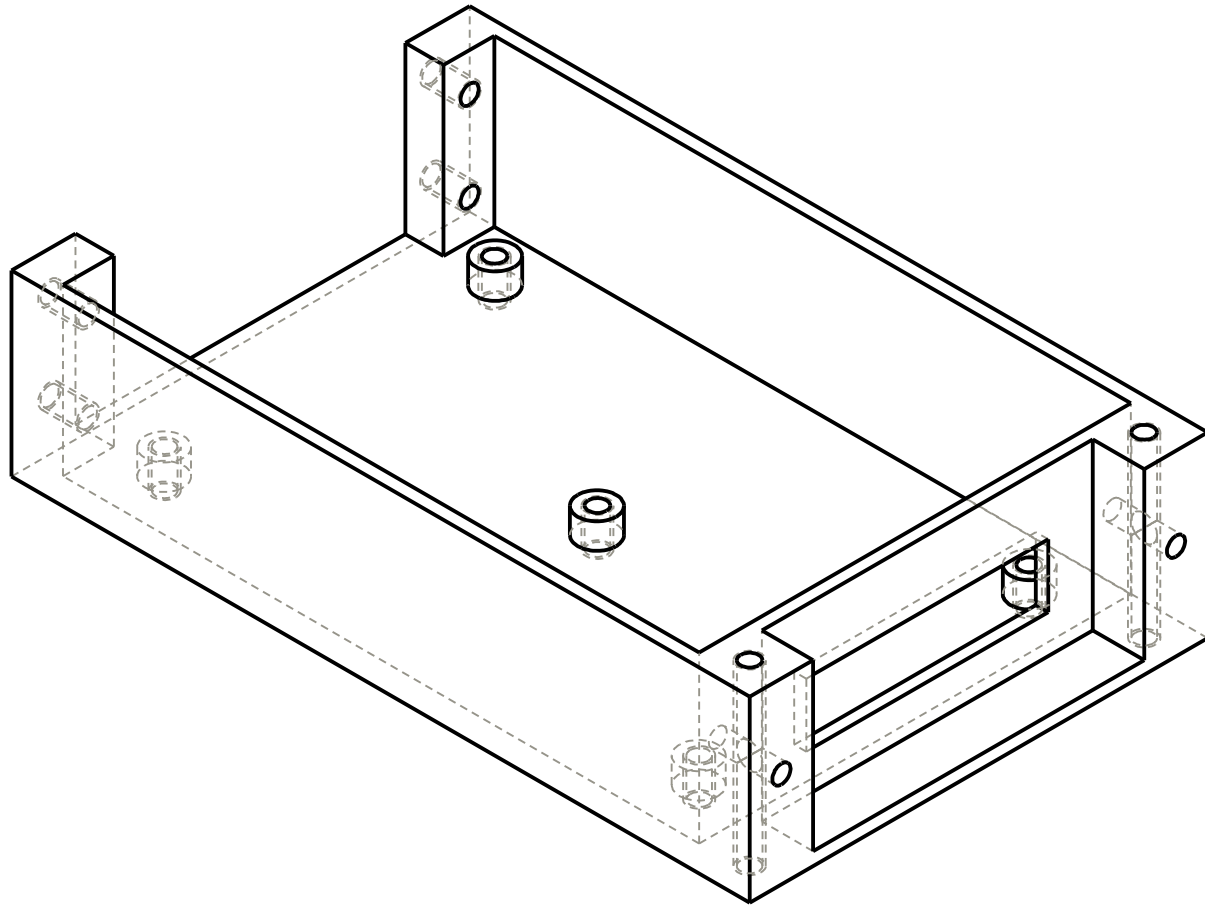
TOLERANCES x . x ± 0.1 x . x x ± 0.01 x . x x x ± 0.001 x . x x x x ± 0.0001	BOTTOM_A		
	MECHANICAL ENGINEERING DEPARTMENT KATE GLEASON COLLEGE OF ENGINEERING ROCHESTER INSTITUTE OF TECHNOLOGY		
ANTHONY J. BERWIN	2.00:1	BOTTOM_A	B
07-Apr-09	ALUMINUM	SHEET 2 OF 4	A



4-40 UNC - 2B TAP THRU
 #43 DRILL (0.089) THRU - (1) HOLE

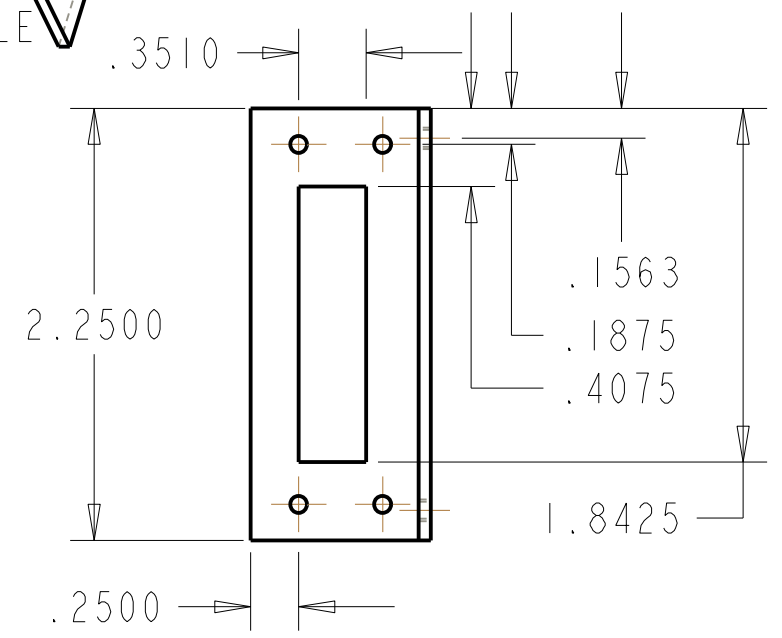
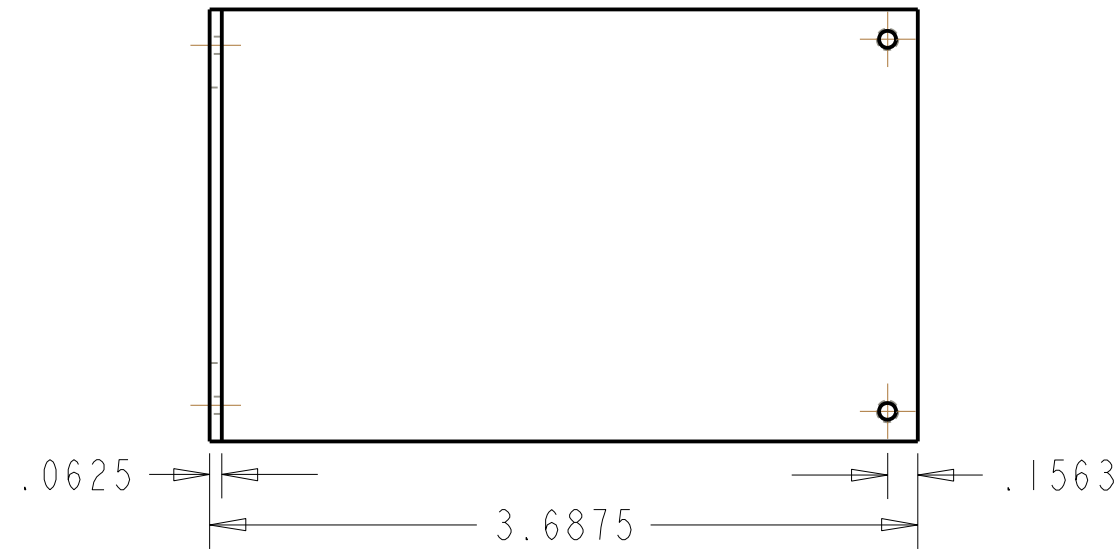
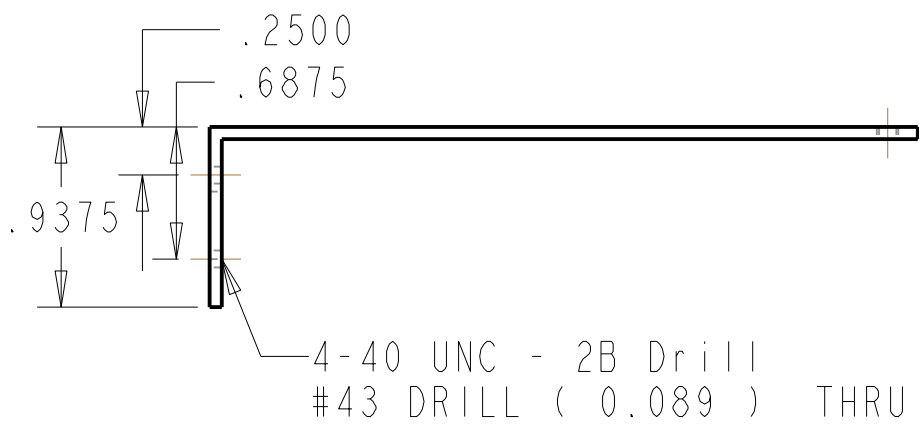
4-40 UNC - 2B TAP THRU
 #43 DRILL (0.089) THRU - (1) HOLE

TOLERANCES x . x ± 0.1 x . xx ± 0.01 x . xxx ± 0.001 x . xxxx ± 0.0001	BOTTOM_A		
	MECHANICAL ENGINEERING DEPARTMENT KATE GLEASON COLLEGE OF ENGINEERING ROCHESTER INSTITUTE OF TECHNOLOGY		
ANTHONY J. BERWIN	2.00:1	BOTTOM_A	B
07-Apr-09	ALUMINUM	SHEET 3 OF 4	A



SCALE 1.500

TOLERANCES x.x ± 0.1 x.xx ± 0.01 x.xxx ± 0.001 x.xxxx ± 0.0001		BOTTOM_A	
		MECHANICAL ENGINEERING DEPARTMENT KATE GLEASON COLLEGE OF ENGINEERING ROCHESTER INSTITUTE OF TECHNOLOGY	
ANTHONY J. BERWIN	2.00:1	BOTTOM_A	B
07-Apr-09	ALUMINUM	SHEET 4 OF 4	A



TOLERANCES x . x ± 0.1 x . x x ± 0.01 x . x x x ± 0.001 x . x x x x ± 0.0001	TOP_A		
	MECHANICAL ENGINEERING DEPARTMENT KATE GLEASON COLLEGE OF ENGINEERING ROCHESTER INSTITUTE OF TECHNOLOGY		
ANTHONY J. BERWIN	1.00:1	TOP_A	B
06-Apr-09	ALUMINUM	SHEET 1 OF 1	A