

Next Steps

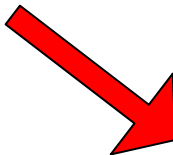
What our plan is going forward.

Project Plan

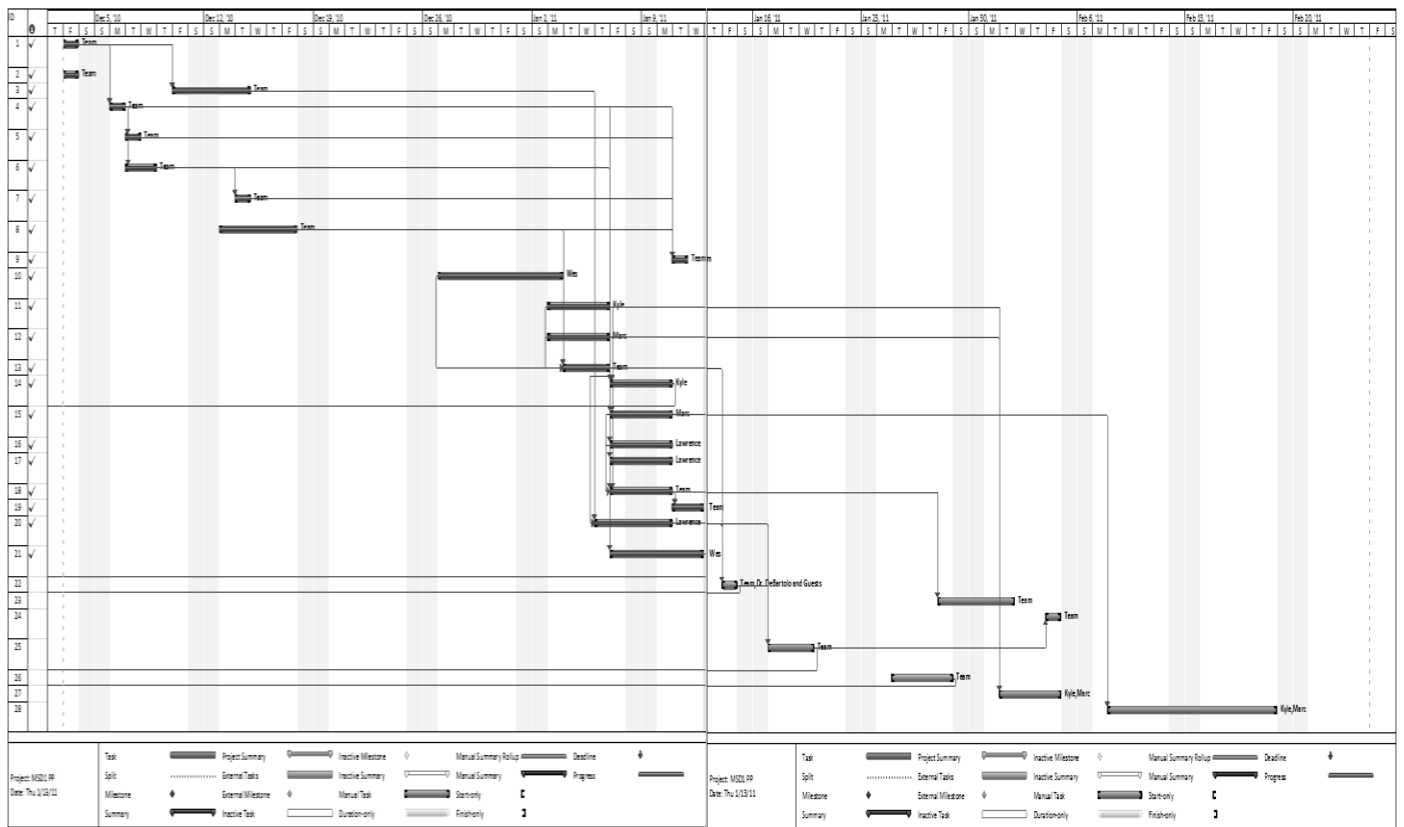
This is the updated version of our Project Plan.

ID		Task Name	Duration	Start	Finish	Predecessors
1	✓	Conduct the Customer Interview	1 day	Fri 12/3/10	Fri 12/3/10	
2	✓	Create Team Norms	1 day	Fri 12/3/10	Fri 12/3/10	
3	✓	Create a Project Plan	3 days	Fri 12/10/10	Tue 12/14/10	1
4	✓	Determine Customer Needs	1 day	Mon 12/6/10	Mon 12/6/10	1
5	✓	Determine Design Specifications	1 day	Tue 12/7/10	Tue 12/7/10	4
6	✓	Generate Conceptual Designs	2 days	Tue 12/7/10	Wed 12/8/10	4
7	✓	Improvement and Selection of Concept	1 day	Tue 12/14/10	Tue 12/14/10	6
8	✓	Understand Prior Design	3 days	Mon 12/13/10	Fri 12/17/10	
9	✓	Create a Summary	1 day	Tue 1/11/11	Tue 1/11/11	8,7,3,4
10	✓	Research Biomechanical Model	6 days	Mon 12/27/10	Mon 1/3/11	
11	✓	Analyze the Forces from Tilt	4 days	Mon 1/3/11	Thu 1/6/11	
12	✓	Analyze the Forces from the Pedals	4 days	Mon 1/3/11	Thu 1/6/11	
13	✓	Analyze the System	3 days	Tue 1/4/11	Thu 1/6/11	8,11,12,15,10,5
14	✓	Design the Tilt Mechanism	2 days	Fri 1/7/11	Mon 1/10/11	3,11
15	✓	Design the Bike Pedals	2 days	Fri 1/7/11	Mon 1/10/11	3,12
16	✓	Design the Display	2 days	Fri 1/7/11	Mon 1/10/11	4,6
17	✓	Design the Hit Counter	2 days	Fri 1/7/11	Mon 1/10/11	4,6
18	✓	Design the System	2 days	Fri 1/7/11	Mon 1/10/11	7,15,16,13
19	✓	Create a BOM	2 days	Tue 1/11/11	Wed 1/12/11	18
20	✓	Conduct a Risk Assessment	3 days	Thu 1/6/11	Mon 1/10/11	3,13
21	✓	Perform Usability Survey	4 days	Fri 1/7/11	Wed 1/12/11	8
22		Hold Design Review	1 day	Fri 1/14/11	Fri 1/14/11	13,20
23		Create Schematics	3 days	Fri 1/28/11	Tue 2/1/11	18
24		Conduct a Feasibility Analysis	1 day	Fri 2/4/11	Fri 2/4/11	25
25		Conduct a Follow-up Risk Assessment	3 days	Mon 1/17/11	Wed 1/19/11	20,22
26		Preliminary Test Plan	4 days	Tue 1/25/11	Fri 1/28/11	
27		Test Frame Stress	4 days	Tue 2/1/11	Fri 2/4/11	11,12
28		Integrate Pedal Design	9 days	Tue 2/8/11	Fri 2/18/11	15
29		Integrate Tilt Design	9 days	Tue 2/8/11	Fri 2/18/11	14
30		Ergonomics Analysis	9 days	Tue 2/8/11	Fri 2/18/11	22
31		Second Usability Test	3 days	Mon 2/14/11	Fri 2/18/11	21,22
32		Execute MSD 1	1 day	Tue 2/15/11	Tue 2/15/11	
33		Determine Status of Project	1 day	Tue 2/15/11	Tue 2/15/11	32,35
34		Final Assessment of Risk	3 days	Wed 2/16/11	Fri 2/18/11	25
35		Review Design History	1 day	Fri 2/18/11	Fri 2/18/11	22,26
36		Schedule MSD 2	3 days	Tue 2/22/11	Thu 2/24/11	32

Current Progress



Task List



Task Calendar

Next Steps

During the upcoming weeks we will be working toward the following goals:

1. Creating schematics for the designs chosen.
2. Testing the frame stress.
3. Integrating the pedal design
4. Integrating the tilt mechanism.
5. Conducting an ergonomic analysis.
6. Planning preliminary tests.