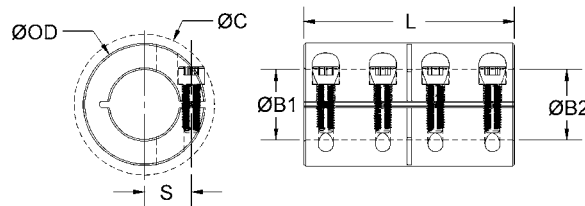


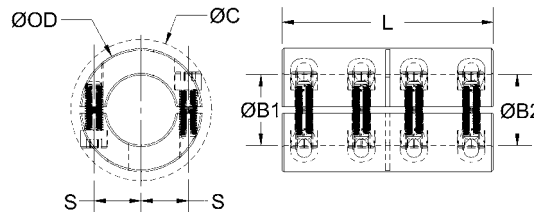
ONE- AND TWO-PIECE RIGID COUPLINGS WITHOUT KEYWAY • INCH DIMENSION SERIES

**CLX
SPX**

CLX



SPX



- Does not mar the shaft.
- Precision honed bore on straight bore couplings.
- 3-piece styles available.
- Nypatch® Anti-vibration hardware.
- Opposing hardware on 2-piece styles.
- Additional sizes available.
- Bore tolerance: +.002"
+.0005"
- Maximum speed: 4,000 rpm

PART NUMBER

SPECIFICATIONS

ONE-PIECE		TWO-PIECE			BORE B1 (in)	BORE B2 (in)	OUTER DIAM. OD (in)	SCREW LOCATION S (in)	CLEARANCE DIAMETER C (in) MAX	LENGTH L (in)	FORGED CLAMP SCREW
BLACK OXIDE STEEL	ALUMINUM	BLACK OXIDE STEEL	BLACK OXIDE STEEL	STAINLESS STEEL							
CLX-2-2-F	CLX-2-2-A	CLX-2-2-SS	SPX-2-2-F	SPX-2-2-SS	0.125	0.125	1/2	0.150	0.578	13/16	#2-56
CLX-3-3-F	CLX-3-3-A	CLX-3-3-SS	SPX-3-3-F	SPX-3-3-SS	0.188	0.188	9/16	0.185	0.651	7/8	#2-56
CLX-4-3-F	CLX-4-3-A	CLX-4-3-SS	SPX-4-3-F	SPX-4-3-SS	0.250	0.188	5/8	0.219	0.815	1	#4-40
CLX-4-4-F	CLX-4-4-A	CLX-4-4-SS	SPX-4-4-F	SPX-4-4-SS	0.250	0.250	5/8	0.219	0.815	1	#4-40
CLX-6-4-F	CLX-6-4-A	CLX-6-4-SS	SPX-6-4-F	SPX-6-4-SS	0.375	0.250	7/8	0.313	1.033	1-3/8	#6-32
CLX-6-6-F	CLX-6-6-A	CLX-6-6-SS	SPX-6-6-F	SPX-6-6-SS	0.375	0.375	7/8	0.313	1.033	1-3/8	#6-32
CLX-8-6-F	CLX-8-6-A	CLX-8-6-SS	SPX-8-6-F	SPX-8-6-SS	0.500	0.375	1-1/8	0.430	1.328	1-3/4	#8-32
CLX-8-8-F	CLX-8-8-A	CLX-8-8-SS	SPX-8-8-F	SPX-8-8-SS	0.500	0.500	1-1/8	0.430	1.328	1-3/4	#8-32
CLX-10-8-F	CLX-10-8-A	CLX-10-8-SS	SPX-10-8-F	SPX-10-8-SS	0.625	0.500	1-5/16	0.484	1.514	2	#10-32
CLX-10-10-F	CLX-10-10-A	CLX-10-10-SS	SPX-10-10-F	SPX-10-10-SS	0.625	0.625	1-5/16	0.484	1.514	2	#10-32
CLX-12-8-F		CLX-12-8-SS	SPX-12-8-F	SPX-12-8-SS	0.750	0.500	1-1/2	0.545	1.842	2-1/4	1/4-28
CLX-12-10-F		CLX-12-10-SS	SPX-12-10-F	SPX-12-10-SS	0.750	0.625	1-1/2	0.545	1.842	2-1/4	1/4-28
CLX-12-12-F		CLX-12-12-SS	SPX-12-12-F	SPX-12-12-SS	0.750	0.750	1-1/2	0.545	1.842	2-1/4	1/4-28
CLX-14-10-F		CLX-14-10-SS	SPX-14-10-F	SPX-14-10-SS	0.875	0.625	1-5/8	0.600	1.932	2-1/2	1/4-28
CLX-14-14-F		CLX-14-14-SS	SPX-14-14-F	SPX-14-14-SS	0.875	0.875	1-5/8	0.600	1.932	2-1/2	1/4-28
CLX-16-8-F		CLX-16-8-SS	SPX-16-8-F	SPX-16-8-SS	1.000	0.500	1-3/4	0.670	2.049	3	1/4-28
CLX-16-12-F		CLX-16-12-SS	SPX-16-12-F	SPX-16-12-SS	1.000	0.750	1-3/4	0.670	2.049	3	1/4-28
CLX-16-16-F		CLX-16-16-SS	SPX-16-16-F	SPX-16-16-SS	1.000	1.000	1-3/4	0.670	2.049	3	1/4-28
CLX-18-16-F		CLX-18-16-SS	SPX-18-16-F	SPX-18-16-SS	1.125	1.000	1-7/8	0.748	2.182	3-1/8	1/4-28
CLX-18-18-F		CLX-18-18-SS	SPX-18-18-F	SPX-18-18-SS	1.125	1.125	1-7/8	0.748	2.182	3-1/8	1/4-28
CLX-19-19-F		CLX-19-19-SS	SPX-19-19-F	SPX-19-19-SS	1.188	1.188	2-1/16	0.807	2.242	3-1/4	1/4-28
CLX-20-16-F		CLX-20-16-SS	SPX-20-16-F	SPX-20-16-SS	1.250	1.000	2-1/16	0.807	2.286	3-1/4	1/4-28
CLX-20-20-F		CLX-20-20-SS	SPX-20-20-F	SPX-20-20-SS	1.250	1.250	2-1/16	0.807	2.286	3-1/4	1/4-28
CLX-22-16-F		CLX-22-16-SS	SPX-22-16-F	SPX-22-16-SS	1.375	1.000	2-1/2	0.986	2.772	3-5/8	5/16-24
CLX-22-22-F		CLX-22-22-SS	SPX-22-22-F	SPX-22-22-SS	1.375	1.375	2-1/2	0.986	2.772	3-5/8	5/16-24
CLX-23-23-F		CLX-23-23-SS	SPX-23-23-F	SPX-23-23-SS	1.438	1.438	2-5/8	1.050	2.840	3-7/8	5/16-24
CLX-24-16-F		CLX-24-16-SS	SPX-24-16-F	SPX-24-16-SS	1.500	1.000	2-5/8	1.050	2.886	3-7/8	5/16-24
CLX-24-24-F		CLX-24-24-SS	SPX-24-24-F	SPX-24-24-SS	1.500	1.500	2-5/8	1.050	2.886	3-7/8	5/16-24
CLX-28-28-F		CLX-28-28-SS	SPX-28-28-F	SPX-28-28-SS	1.750	1.750	3-1/8	1.305	3.365	4-1/2	3/8-24
CLX-31-31-F		CLX-31-31-SS	SPX-31-31-F	SPX-31-31-SS	1.938	1.938	3-3/8	1.391	3.657	4-7/8	3/8-24
CLX-32-32-F		CLX-32-32-SS	SPX-32-32-F	SPX-32-32-SS	2.000	2.000	3-3/8	1.391	3.717	4-7/8	3/8-24

FOR ENGINEERING AND WARRANTY INFORMATION SEE WWW.RULAND.COM