



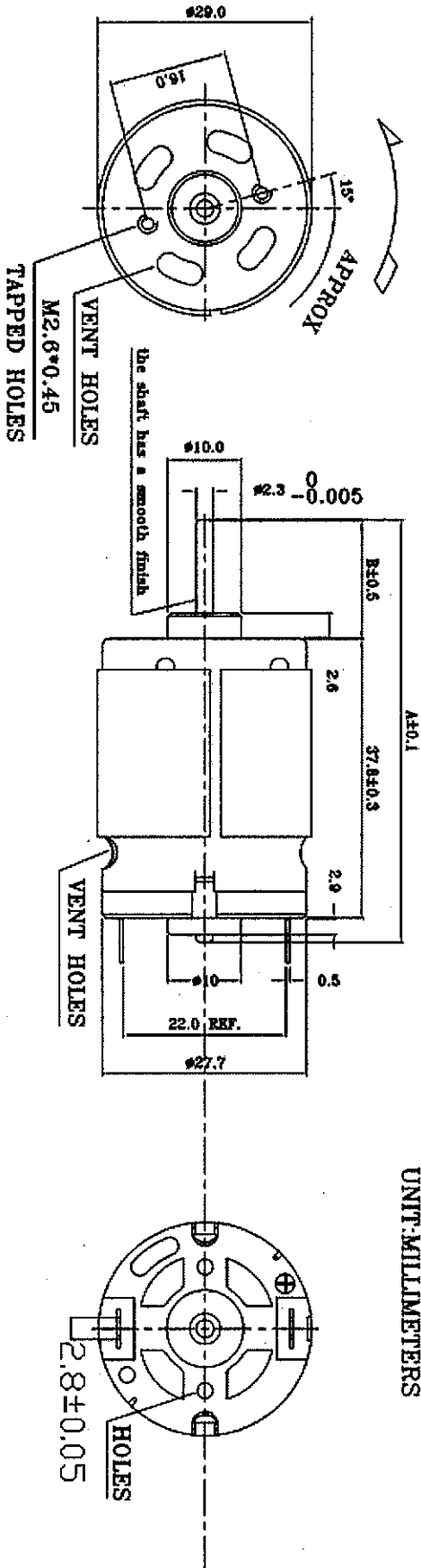
www.yeno-electronics.com

DC Motor

Pump Motor

RS-385-16140

DIRECTION OF ROTATION



TEST CONDITION :

AT NO LOAD :

AT MAXIMUM EFFICIENCY :

1. RATED VOLTAGE : 24.0 VDC
2. OPERATING TEMPERATURE RANGE : -10°C----- 60°C
1. CURRENT : 0.15 A max
2. SPEED : 8800±10% rpm
1. CURRENT : 0.55 A
2. OUTPUT : 7.8 W
3. SPEED : 7300 rpm

NOTES:

1. LENGTH OF SHAFT DIM"A" IS: 57.0 mm
2. FRONT EXTENSION DIM"B" IS: 16.2 mm
MEASURED WITH SHAFT PUSHED TO PLASTIC END CAP
3. END PLAY 0.50 mm Max.
4. DIRECTION OF ROTATION: ANTI-CLOCKWISE
WHEN VIEWING MOTOR OUTPUT END WITH POSITIVE VOLTAGE APPLIED TO POSITIVE TERMINAL

RS 7/28/09