

MODEL NAME
STOVE

TITLE

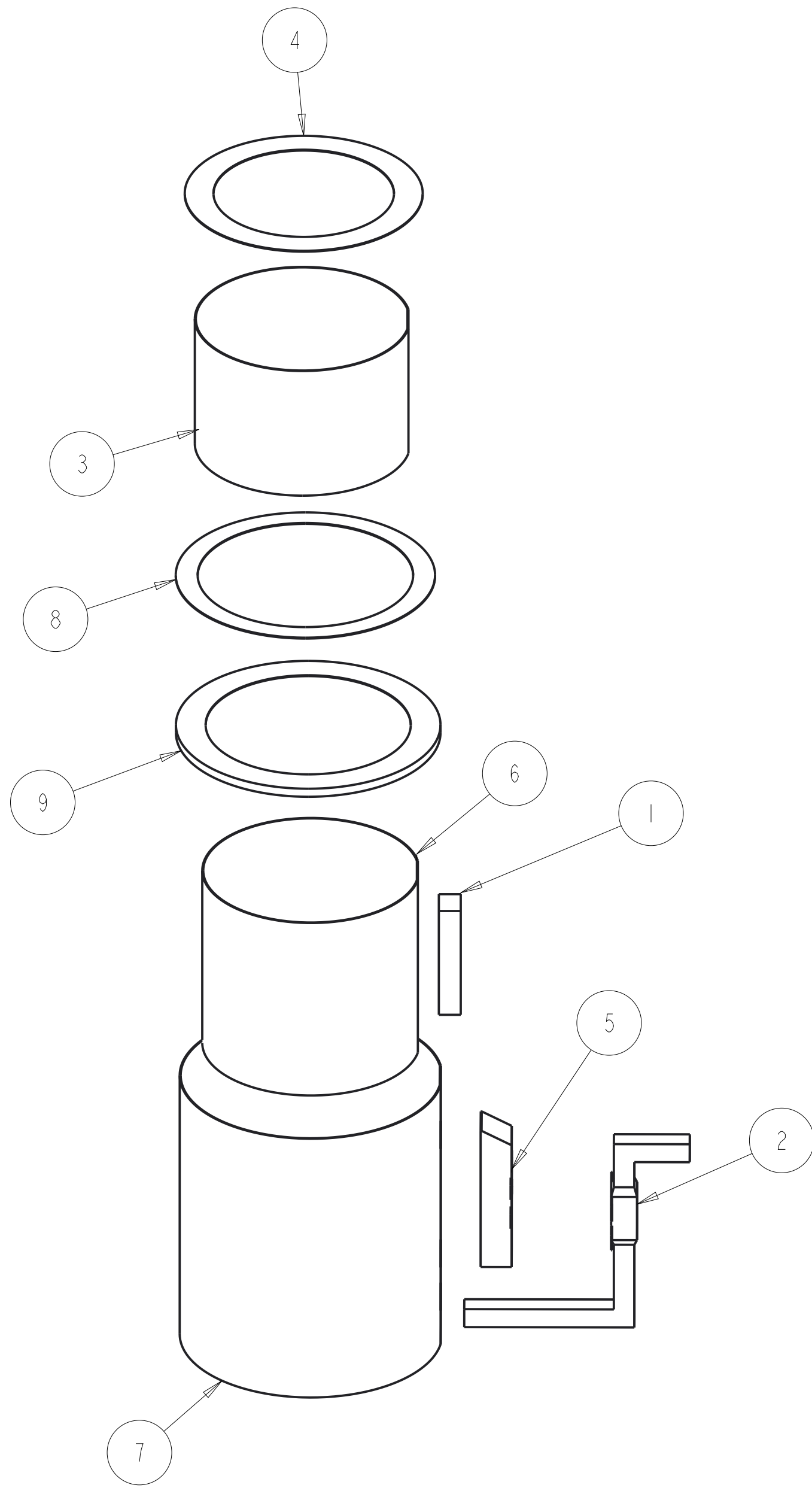
| ITEM NO | PART NUMBER | QTY | DESCRIPTION | NOTES |
|---------|---------------------------|-----|-------------------------------|-------|
| 1 | AIR_OUTLET_CHANNEL | 1 | air_outlet_channel.prt | |
| 2 | COLD_ENTRANCE | 1 | cold_entrance.prt | |
| 3 | COMBUSTION_CHAMBER | 1 | combustion_chamber.prt | |
| 4 | COMBUSTION_CHAMBER_FLANGE | 1 | combustion_chamber_flange.prt | |
| 5 | HOT_AIR_EXIT_HOUSING | 1 | hot_air_exit_housing.prt | |
| 6 | INNER_WALL | 1 | stove_body.prt_INST | |
| 7 | OUTER_WALL | 1 | stove_body.prt_INST | |
| 8 | RING_CONNECTOR | 1 | ring_connector.prt | |
| 9 | SKIRT_RING | 1 | skirt_ring.prt | |

D

C

B

A



D

C

B

A

| | | | |
|---------------------------------------------------------------------------------------------------------------------------------------------------------------------------------------------------------|--|--------------------------------------------|-----------------------|
| Material | | DRAWN BY MLS | DATE 05/15/13 |
| | | CHECKED BY AR | DATE 05/15/13 |
| | | APPROVED BY | DATE |
| <small>THIS DOCUMENT IS SUPPLIED IN CONFIDENCE. NO REPRODUCTION OF THIS DOCUMENT IN PART OR IN WHOLE OR IN ANY OF THE ITEMS SHOWN MAY BE MADE WITHOUT THE COPYRIGHT OWNER'S WRITTEN PERMISSION.</small> | | SCALE 0.143 | SHEET 1 OF 1 |
| <small>UNLESS OTHERWISE SPECIFIED ALL DIMENSIONS ARE IN INCHES. TOLERANCES ARE: X.X +/- 0.1 X.XX +/- 0.01 X.XXX +/- 0.001 ANG +/- 1°</small> | | MODEL NAME STOVE | |
| DO NOT SCALE | | TITLE Thermoelectric Charcoal Cookstove | PROJECT MSD P13441 |
| | | REV | 2 |