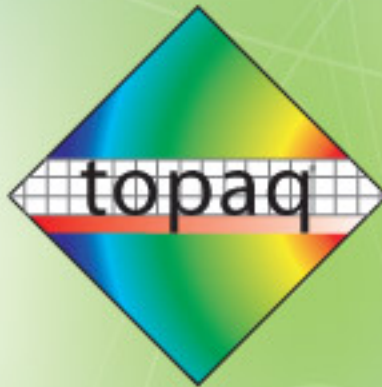


RIT Formula SAE

Topaq Film Analysis - 4/9/2014



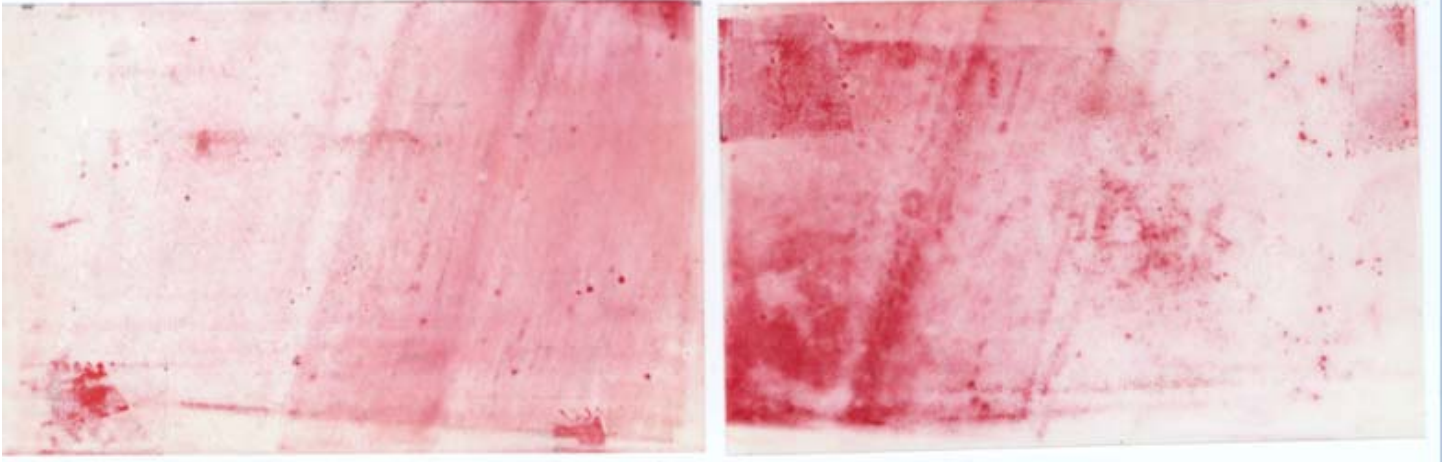
Rep: Paul Calado
Phone: 1.973.884.1755 – ext 5843
Email: pcalado@sensorprod.com

Application: Clamping
Film Type: Super Low (llw)



Topaq Film Analysis

Original Film Image



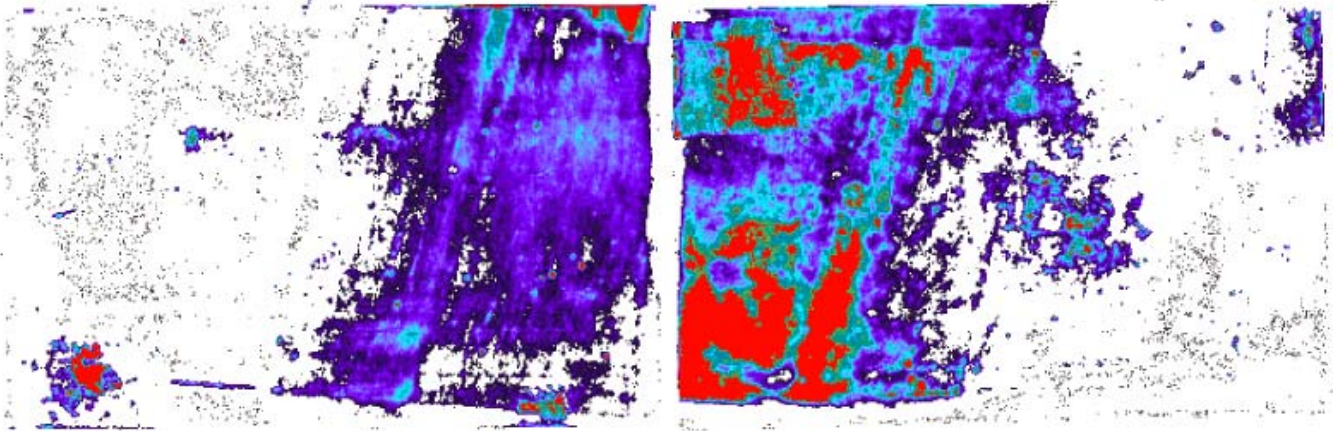
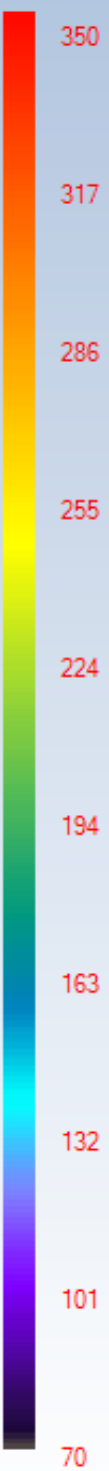
Comments:



Topaq Film Analysis

Pseudocolor Representation and Pressure Statistics

PSI



Statistics

Image: Cropped Scanned Image Pseudocolor Rep

Average Pressure	130.49	PSI
Std. Dev	79.53	PSI
Contact Area	4.50	sq.in
Total Area	11.29	sq.in
Force	587.02	lbf
Minimum	70.51	PSI
Maximum	350.00	PSI

Format : #,###.##

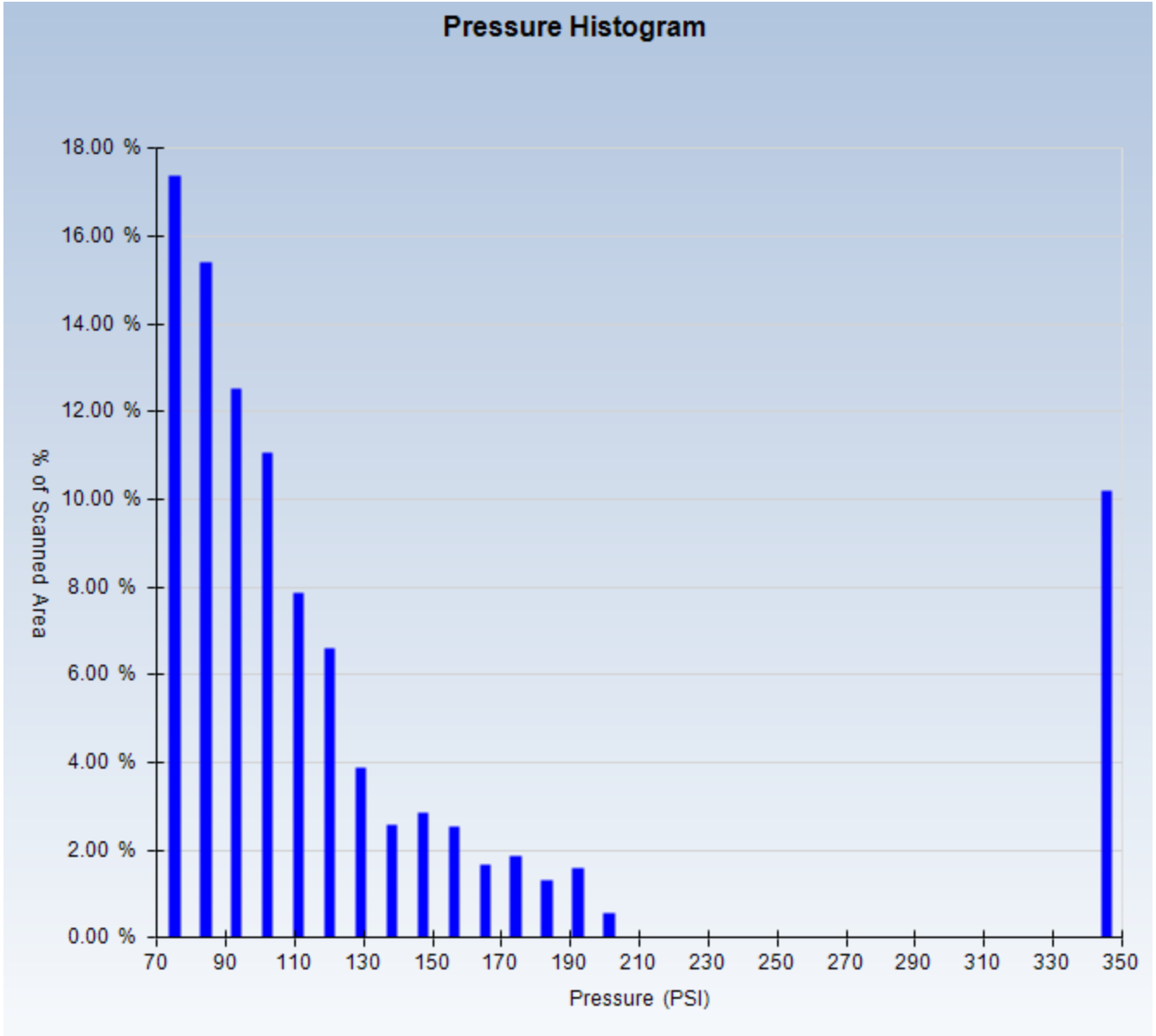
Entire Image

Comments:



Topaq Film Analysis

Pressure Histogram

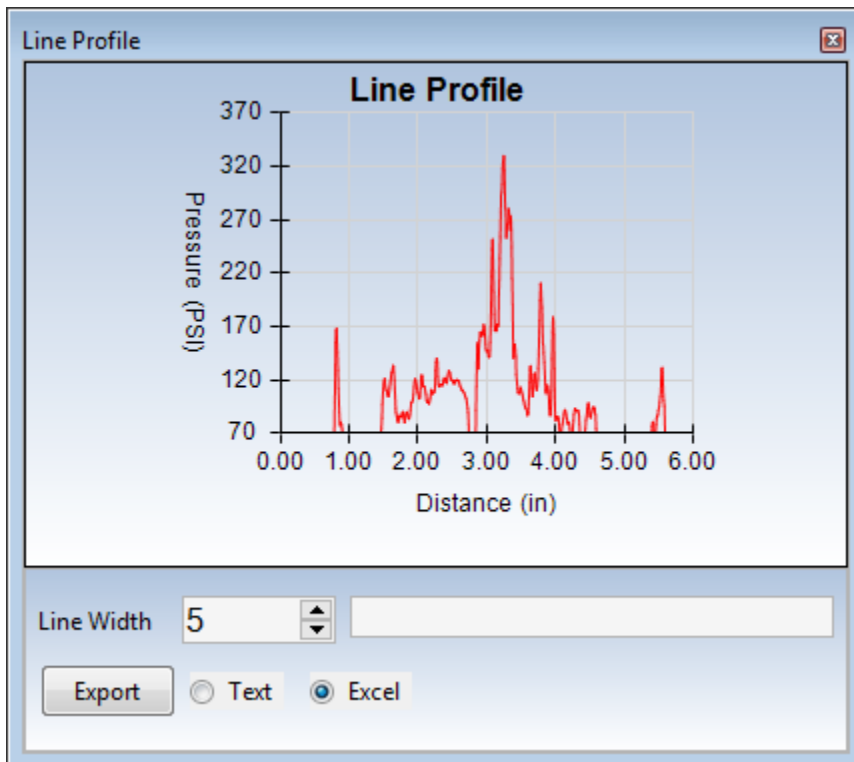
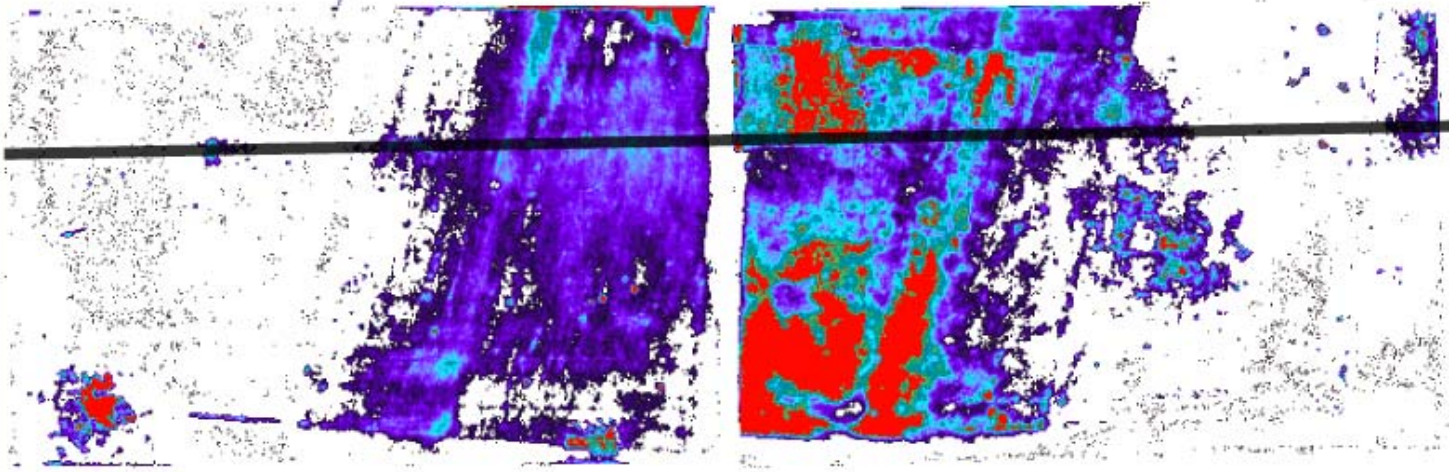


Comments:



Topaq Film Analysis

Line Scan

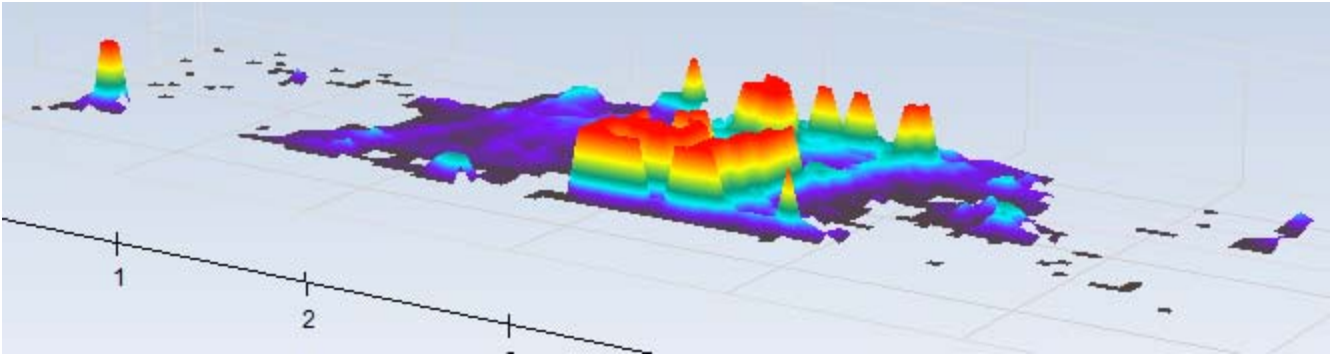


Comments:



Topaq Film Analysis

3D Image

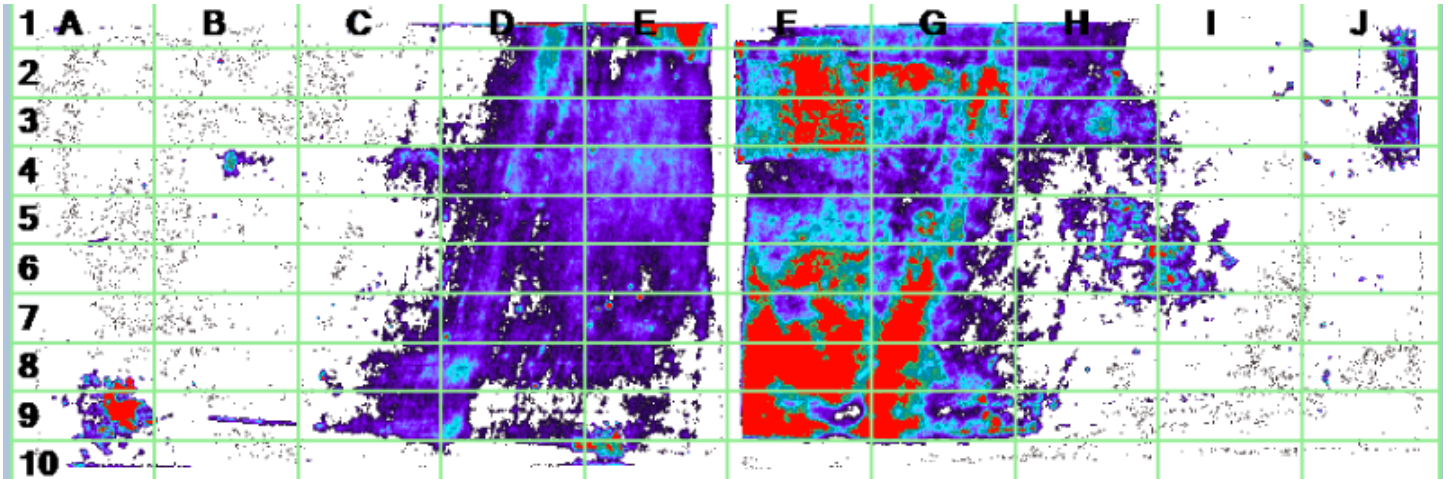


Comments:



Topaq Film Analysis

Measure In Grid 10x10 (Raw Data)



Comments:

We are able to extract and present statistics for each cell in this quadrant.