


ID	Task Mode	Task Name	Duration	% Complete	Start	Finish	Aug 25, '13				Sep 1, '13
							S	M	W	F	S
1		<b>MSD I</b>		<b>99%</b>	<b>Mon 9/9/13</b>						
2		<b>Ongoing</b>	<b>78 days?</b>	<b>100%</b>	<b>Mon 9/9/13</b>	<b>Wed 12/25/13</b>					
3		Develop project plan	15.6 wks	100%	Tue 8/27/13	Thu 12/12/13					
4		Perform risk analysis	13.6 wks	100%	Tue 9/10/13	Thu 12/12/13					
5		<b>Module 1</b>	<b>19 days</b>	<b>100%</b>	<b>Tue 8/27/13</b>	<b>Fri 9/20/13</b>					
6		Define team roles	6 days	100%	Thu 9/5/13	Thu 9/12/13					
7		Finalize HOQ	7 days	100%	Tue 9/3/13	Wed 9/11/13					
8		Take team picture	1 day	100%	Thu 9/5/13	Thu 9/5/13					
9		Create website home page	2.6 wks	100%	Tue 8/27/13	Thu 9/12/13					
10		Develop team norms and values	1.2 wks	100%	Thu 9/5/13	Thu 9/12/13					
11		Create peer review form	1.2 wks	100%	Fri 9/13/13	Fri 9/20/13					
12		Problem Definition Review	0 days	100%	Thu 9/12/13	Thu 9/12/13					
13		<b>Module 2</b>	<b>34 days</b>	<b>100%</b>	<b>Mon 9/9/13</b>	<b>Thu 10/24/13</b>					
14		Meet with Concrete Experts	0 days	100%	Thu 9/19/13	Thu 9/19/13					
15		Complete Stakeholder Interviews	0 days	100%	Tue 10/1/13	Tue 10/1/13					
16		<b>Benchmarking</b>	<b>16 days</b>	<b>100%</b>	<b>Tue 9/10/13</b>	<b>Tue 10/1/13</b>					
17		Past/current Arborloos	3.2 wks	100%	Tue 9/10/13	Tue 10/1/13					
18		Local Haitian Material (Interviews)	3.2 wks	100%	Tue 9/10/13	Tue 10/1/13					

Project: ProjectSchedule  
Date: Mon 12/9/13

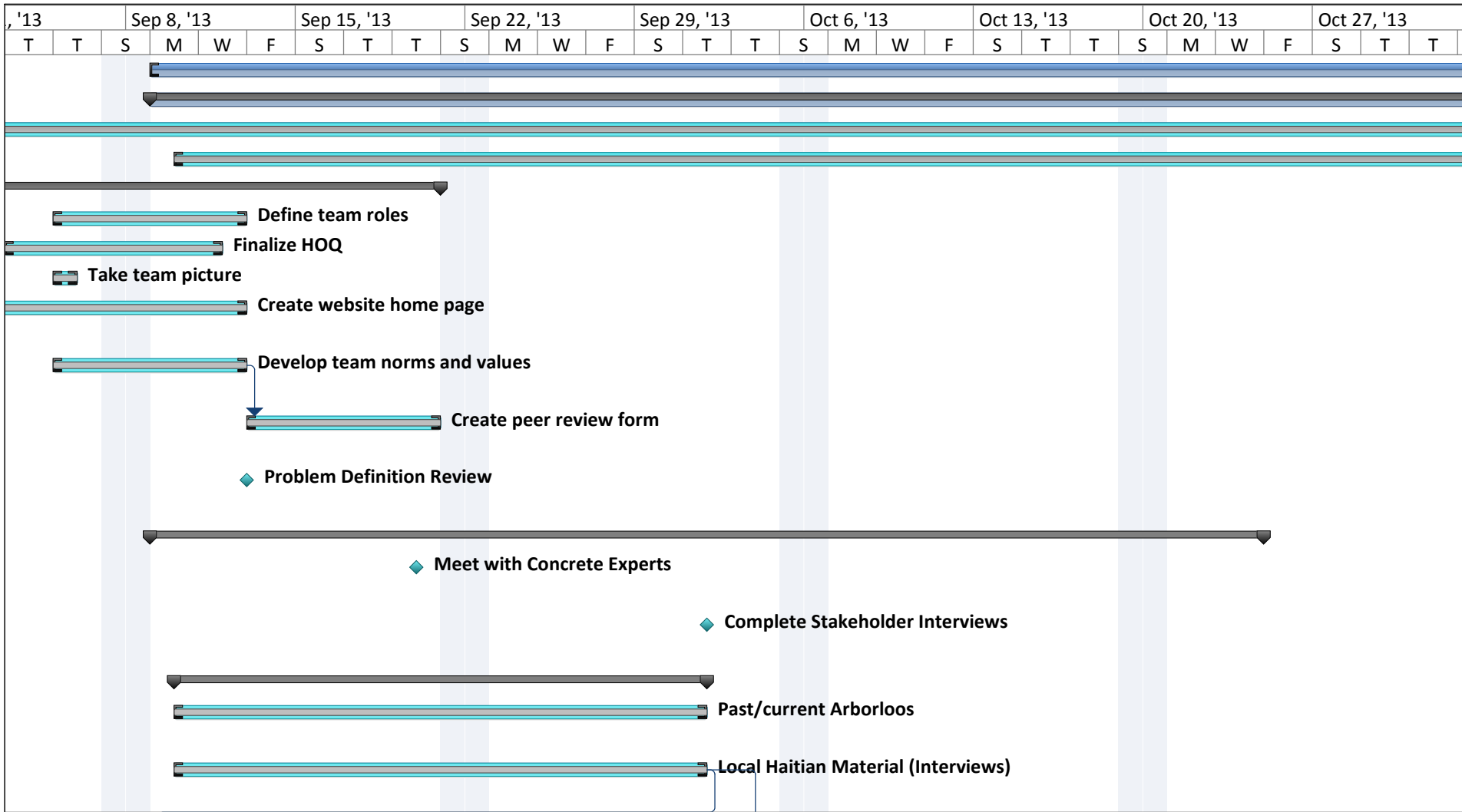
Task		External Milestone		Manual Summary Rollup	
Split		Inactive Task		Manual Summary	
Milestone		Inactive Milestone		Start-only	
Summary		Inactive Summary		Finish-only	
Project Summary		Manual Task		Deadline	
External Tasks		Duration-only		Progress	

ID	Task Mode	Task Name	Duration	% Complete	Start	Finish	Aug 25, '13				Sep 1, '13	
							S	M	W	F	S	
19	✓	📌	Transportation methods	3.2 wks	100%	Tue 9/10/13	Tue 10/1/13					
20	✓	📌	Concrete composites (aggregates, rebar)	3.2 wks	100%	Tue 9/10/13	Tue 10/1/13					
21	✓	📌	Functional Decomposition	1 wk	100%	Tue 9/17/13	Mon 9/23/13					
22	✓	📌	Preliminary Engineering Analysis	1.8 wks	100%	Thu 9/19/13	Tue 10/1/13					
23	✓	📌	Concept Generation (Morph Table)	1 wk	100%	Tue 9/17/13	Mon 9/23/13					
24	✓	📌	Concept Selection	1 wk	100%	Tue 9/24/13	Mon 9/30/13					
25	✓	📌	Systems Architecture	1 wk	100%	Tue 9/24/13	Mon 9/30/13					
26	✓	📌	Research Concrete Test Standard	1 day	100%	Mon 9/9/13	Mon 9/9/13					
27	✓	📌	Develop Concrete Test Procedure	9 days	100%	Tue 9/10/13	Fri 9/20/13					
28	✓	📌	Create basic ANSYS model	3 wks	100%	Fri 10/4/13	Thu 10/24/13					
29	✓	📌	Develop Initial Test Plan	9 days	100%	Thu 9/19/13	Tue 10/1/13					
30	✓	📌	Systems Design Review	0 days	100%	Tue 10/1/13	Tue 10/1/13					
31	✓	📌	<b>Module 3</b>	<b>16 days</b>	<b>100%</b>	<b>Tue 10/8/13</b>	<b>Tue 10/29/13</b>					
32	✓	📌	Finalize mixture design	3.2 wks	100%	Tue 10/8/13	Tue 10/29/13					
33	✓	📌	Purchase test materials	3.2 wks	100%	Tue 10/8/13	Tue 10/29/13					
34	✓	📌	Mix test specimens	16 days	100%	Tue 10/8/13	Tue 10/29/13					
35	✓	📌	Evaluate transportability features	3.2 wks	100%	Tue 10/8/13	Tue 10/29/13					
36	✓	📌	Evaluate shelter-base connection features	3.2 wks	100%	Tue 10/8/13	Tue 10/29/13					

Project: ProjectSchedule Date: Mon 12/9/13	Task		External Milestone		Manual Summary Rollup	
	Split		Inactive Task		Manual Summary	
	Milestone		Inactive Milestone		Start-only	
	Summary		Inactive Summary		Finish-only	
	Project Summary		Manual Task		Deadline	
	External Tasks		Duration-only		Progress	

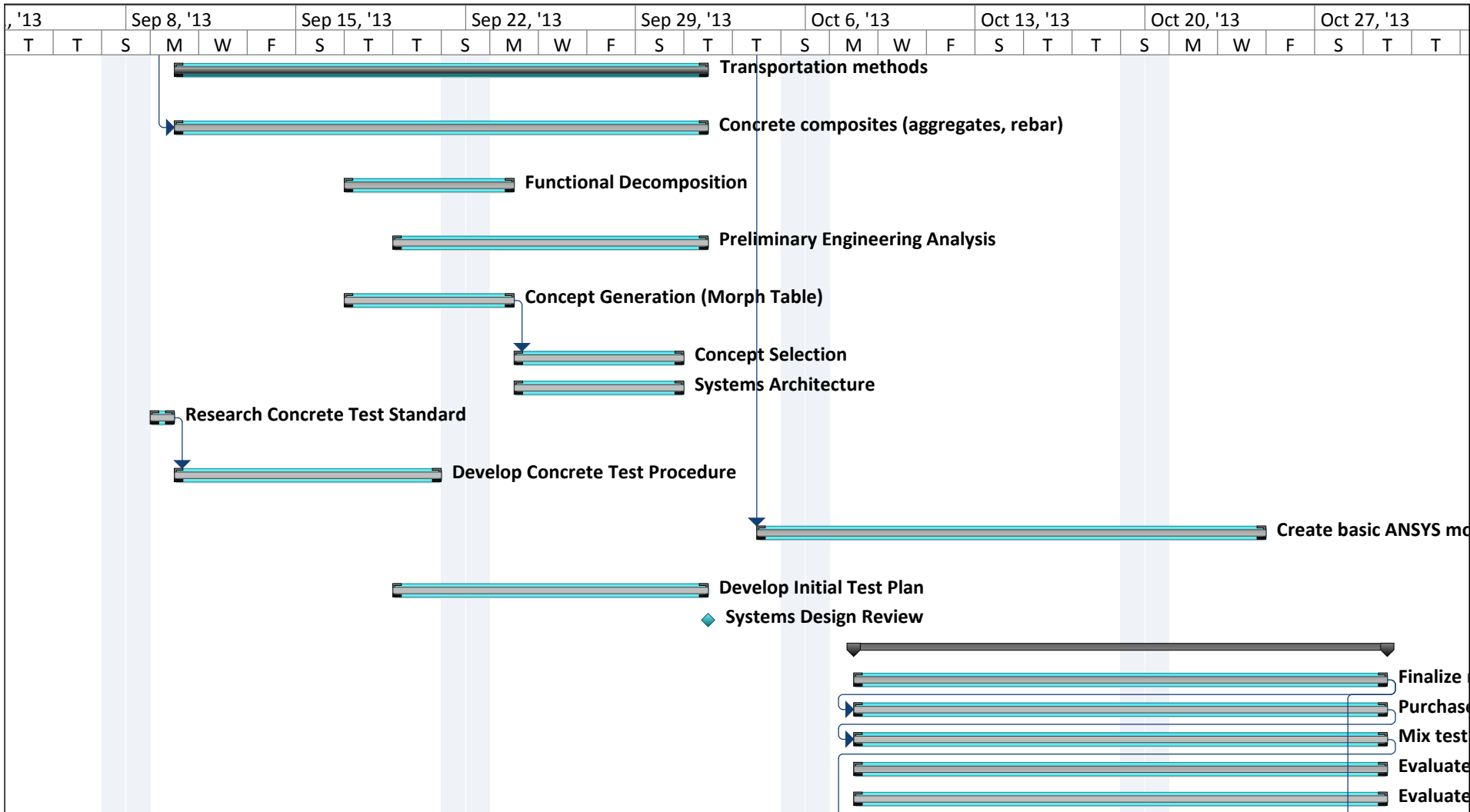
ID		Task Mode	Task Name	Duration	% Complete	Start	Finish	Aug 25, '13				Sep 1, '13	
								S	M	W	F	S	
37			Cost Analysis	16 days	100%	Tue 10/8/13	Tue 10/29/13						
38			Mold Design Research	16 days	100%	Tue 10/8/13	Tue 10/29/13						
39			Perform trade-off analysis	3.2 wks	100%	Tue 10/8/13	Tue 10/29/13						
40			Perform structural analysis	3.2 wks	100%	Tue 10/8/13	Tue 10/29/13						
41			Subsystems Design Review	0 days	100%	Tue 10/29/13	Tue 10/29/13						
42			<b>Module 4</b>	<b>16 days</b>	<b>100%</b>	Tue 10/29/13	Tue 11/19/13						
43			Test mixtures (compression)	27 days	100%	Tue 10/8/13	Tue 11/19/13						
44			Flexural Test Procedure	16 days	100%	Tue 10/29/13	Tue 11/19/13						
45			Flexural Testing	16 days	100%	Tue 10/29/13	Tue 11/19/13						
46			Select 2 reinforcements	16 days	100%	Tue 10/29/13	Tue 11/19/13						
47			Geometry Selection	16 days	100%	Tue 10/29/13	Tue 11/19/13						
48			Select transportability features	3.2 wks	100%	Tue 10/29/13	Tue 11/19/13						
49			Select shelter-base connection features	3.2 wks	100%	Tue 10/29/13	Tue 11/19/13						
50			Aesthetic Design (Stamping)	16 days	100%	Tue 10/29/13	Tue 11/19/13						
51			Mold Design	16 days	100%	Tue 10/29/13	Tue 11/19/13						
52			Create BOM	3.2 wks	100%	Tue 10/29/13	Tue 11/19/13						
53			<b>Module 5</b>	<b>20 days</b>	<b>92%</b>	Tue 11/19/13	Mon 12/16/13						
54			Choose final mixture (aggregates)	16 days	100%	Tue 10/8/13	Fri 11/29/13						
55			Map out supply chain	16 days	100%	Tue 10/29/13	Tue 11/19/13						
56			Preliminary Test Plan	16 days	100%	Tue 11/19/13	Tue 12/10/13						
57			Create CAD drawings (2)	3.2 wks	100%	Tue 11/19/13	Tue 12/10/13						
58			Assembly Manual	16 days	50%	Tue 11/19/13	Tue 12/10/13						
59			MSD II Plan	16 days	100%	Tue 11/19/13	Tue 12/10/13						
60			Detailed design review	0 days	0%	Tue 12/10/13	Tue 12/10/13						
61			Gate Review	0 days	0%	Mon 12/16/13	Mon 12/16/13						

Project: ProjectSchedule Date: Mon 12/9/13	Task		External Milestone		Manual Summary Rollup	
	Split		Inactive Task		Manual Summary	
	Milestone		Inactive Milestone		Start-only	
	Summary		Inactive Summary		Finish-only	
	Project Summary		Manual Task		Deadline	
	External Tasks		Duration-only		Progress	



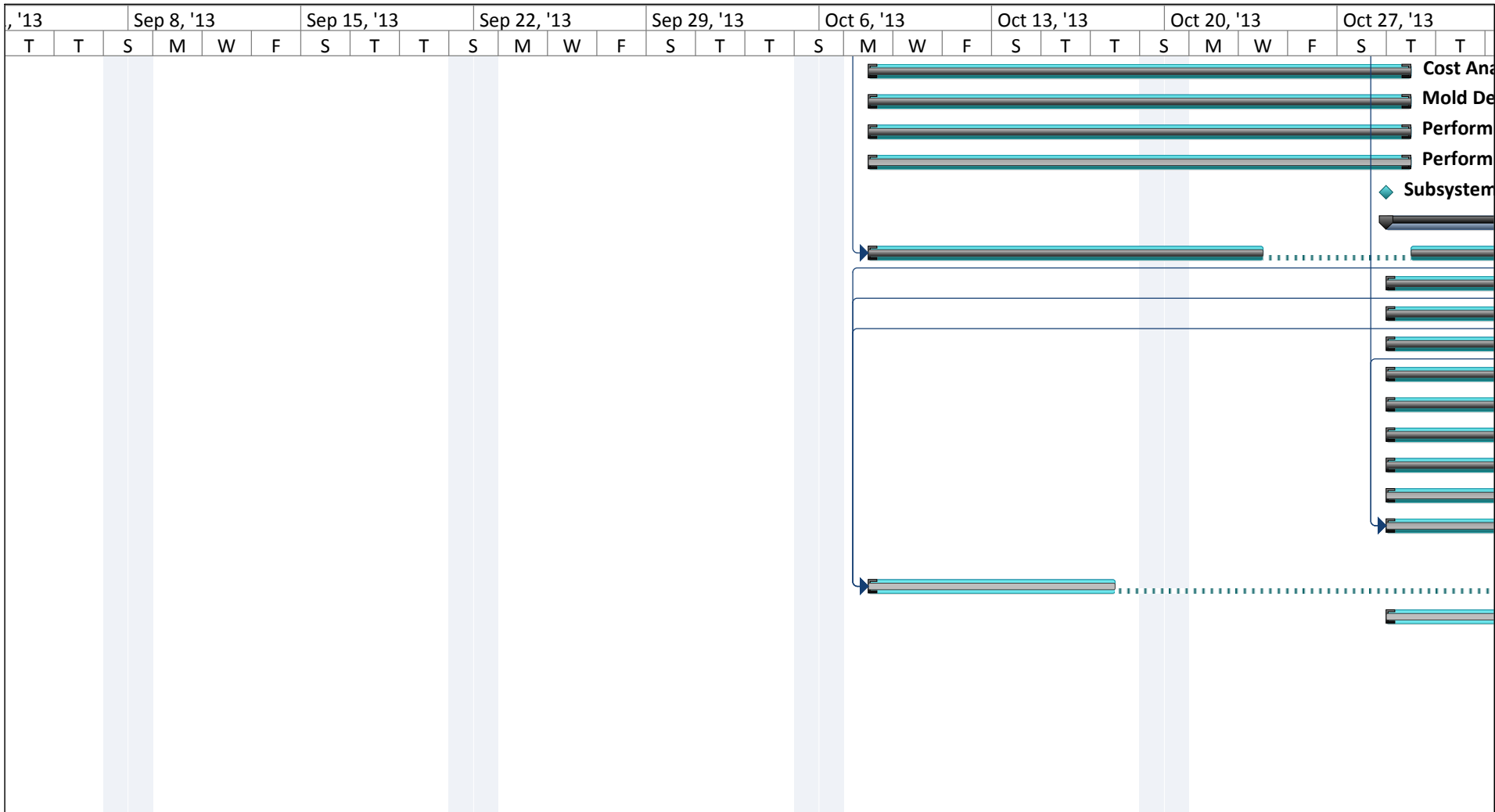
Project: ProjectSchedule  
Date: Mon 12/9/13

Task		External Milestone		Manual Summary Rollup	
Split		Inactive Task		Manual Summary	
Milestone		Inactive Milestone		Start-only	
Summary		Inactive Summary		Finish-only	
Project Summary		Manual Task		Deadline	
External Tasks		Duration-only		Progress	



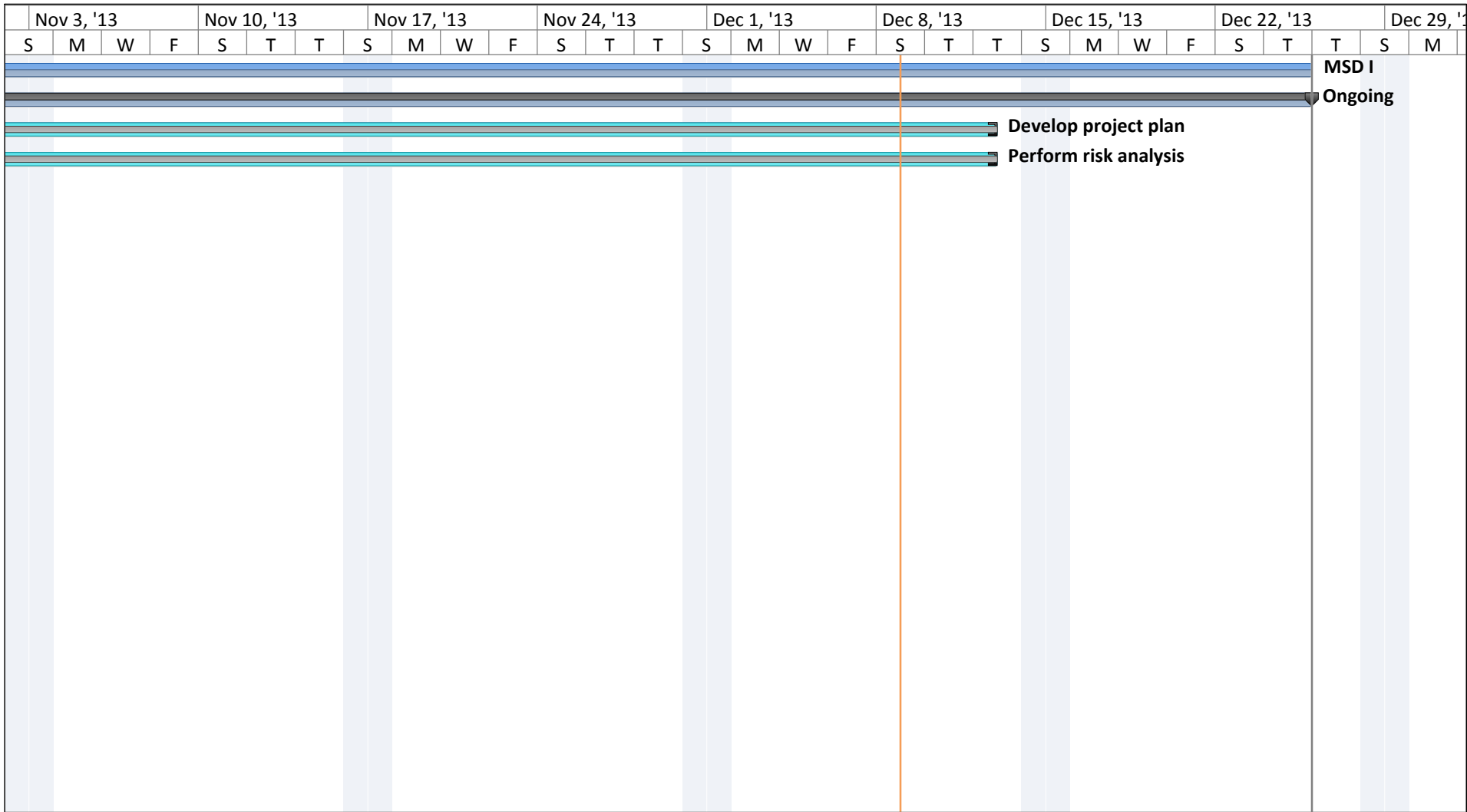
Project: ProjectSchedule  
Date: Mon 12/9/13

Task		External Milestone		Manual Summary Rollup	
Split		Inactive Task		Manual Summary	
Milestone		Inactive Milestone		Start-only	
Summary		Inactive Summary		Finish-only	
Project Summary		Manual Task		Deadline	
External Tasks		Duration-only		Progress	



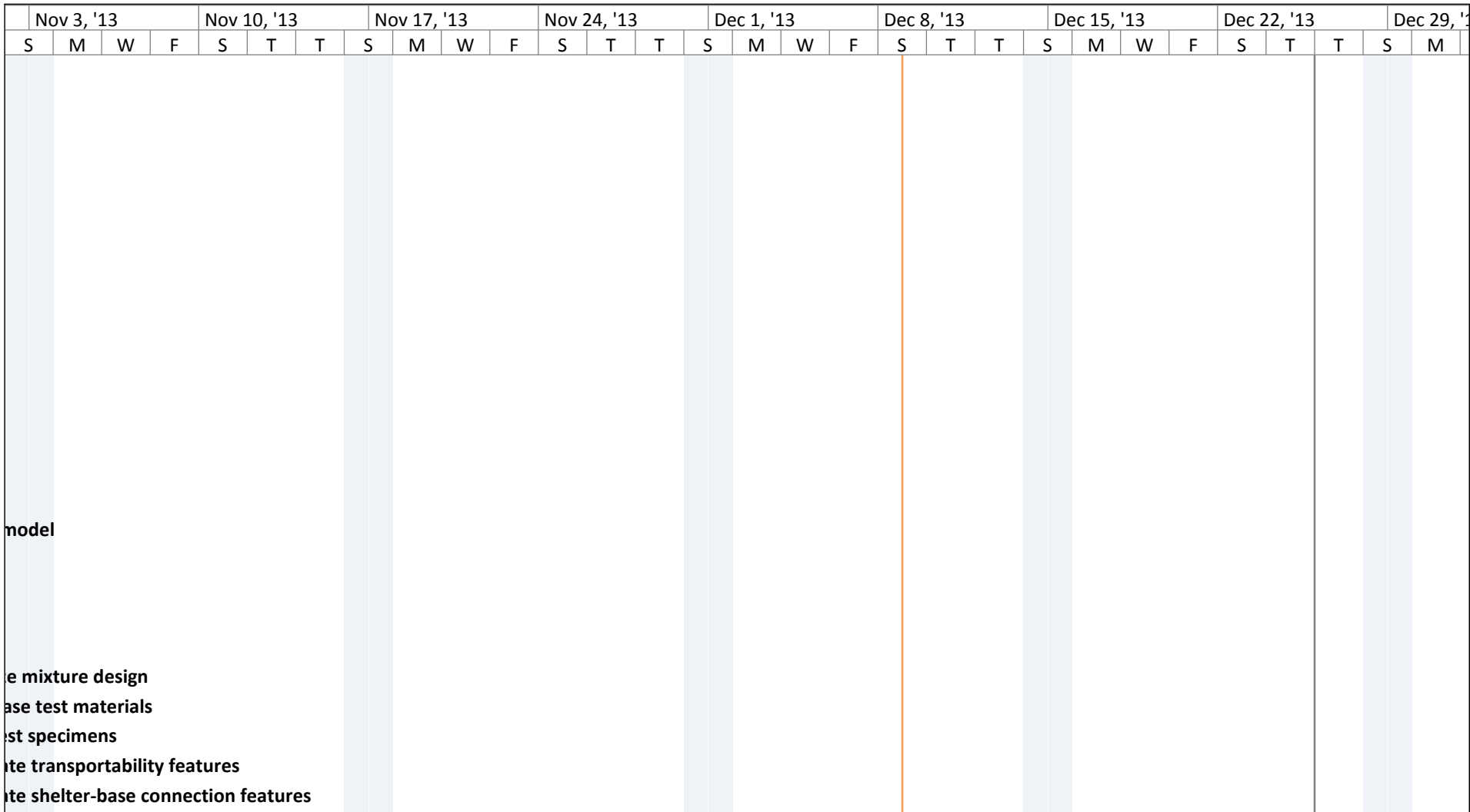
Project: ProjectSchedule  
Date: Mon 12/9/13

Task		External Milestone		Manual Summary Rollup	
Split		Inactive Task		Manual Summary	
Milestone		Inactive Milestone		Start-only	
Summary		Inactive Summary		Finish-only	
Project Summary		Manual Task		Deadline	
External Tasks		Duration-only		Progress	



Project: ProjectSchedule  
Date: Mon 12/9/13

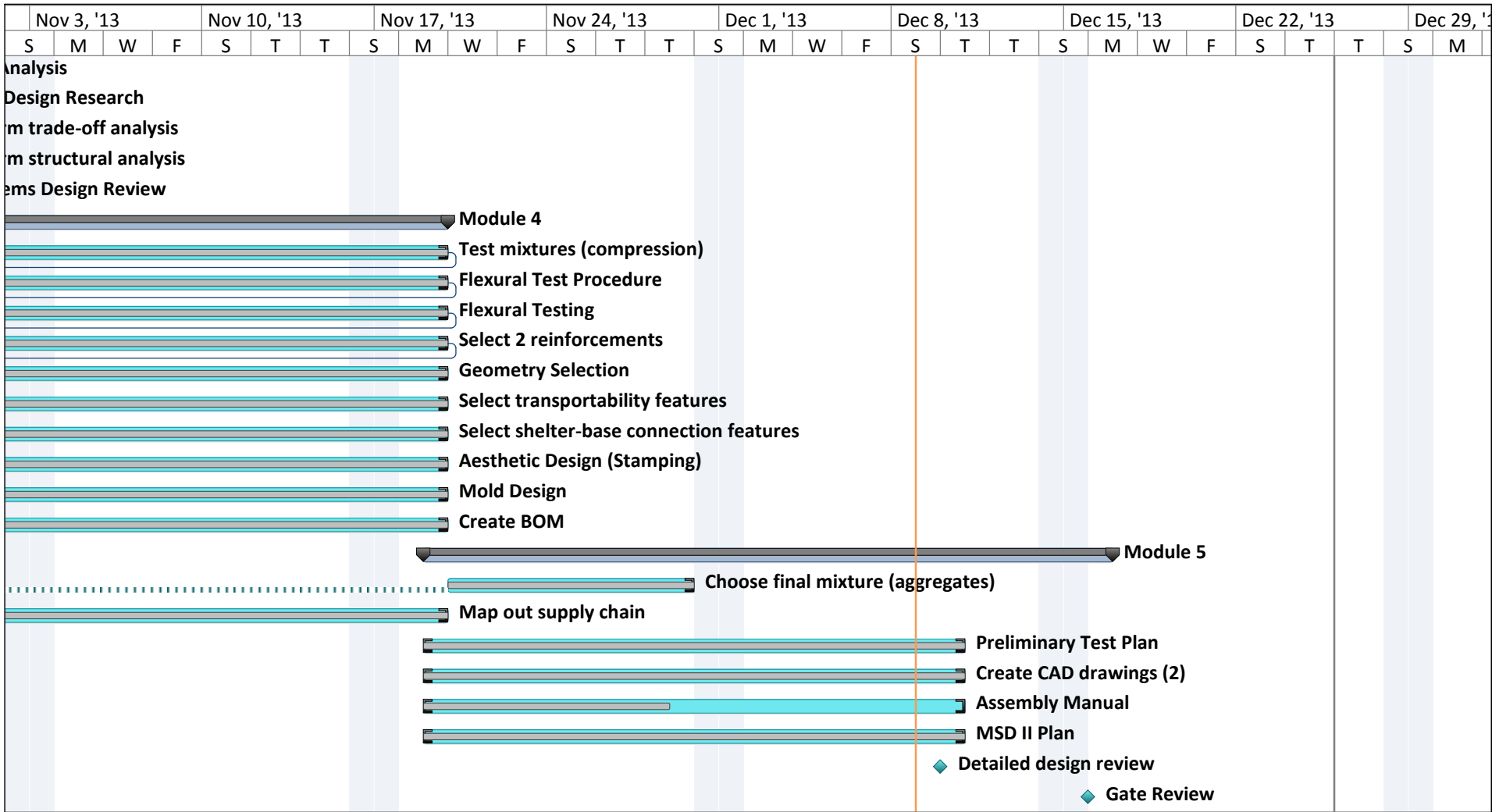
Task		External Milestone		Manual Summary Rollup	
Split		Inactive Task		Manual Summary	
Milestone		Inactive Milestone		Start-only	
Summary		Inactive Summary		Finish-only	
Project Summary		Manual Task		Deadline	
External Tasks		Duration-only		Progress	



Project: ProjectSchedule  
Date: Mon 12/9/13

Task		External Milestone		Manual Summary Rollup	
Split		Inactive Task		Manual Summary	
Milestone		Inactive Milestone		Start-only	
Summary		Inactive Summary		Finish-only	
Project Summary		Manual Task		Deadline	
External Tasks		Duration-only		Progress	





Project: ProjectSchedule Date: Mon 12/9/13	Task		External Milestone		Manual Summary Rollup	
	Split		Inactive Task		Manual Summary	
	Milestone		Inactive Milestone		Start-only	
	Summary		Inactive Summary		Finish-only	
	Project Summary		Manual Task		Deadline	
	External Tasks		Duration-only		Progress	