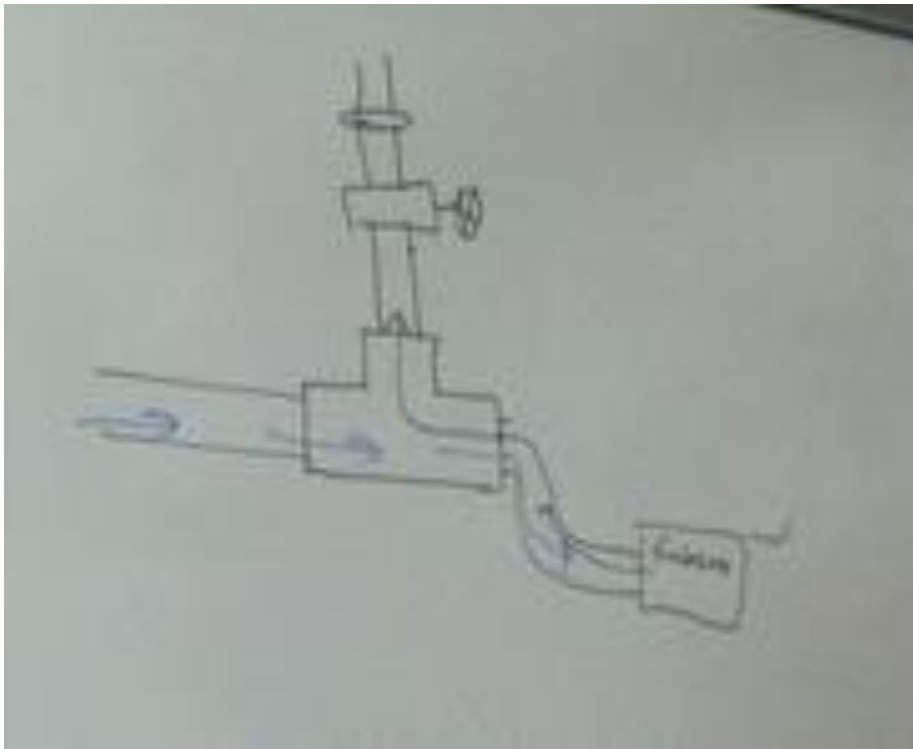
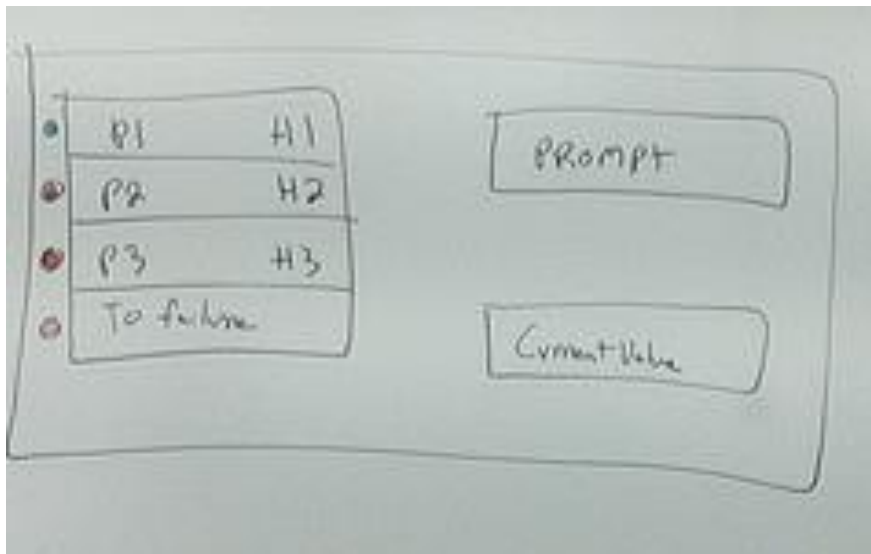


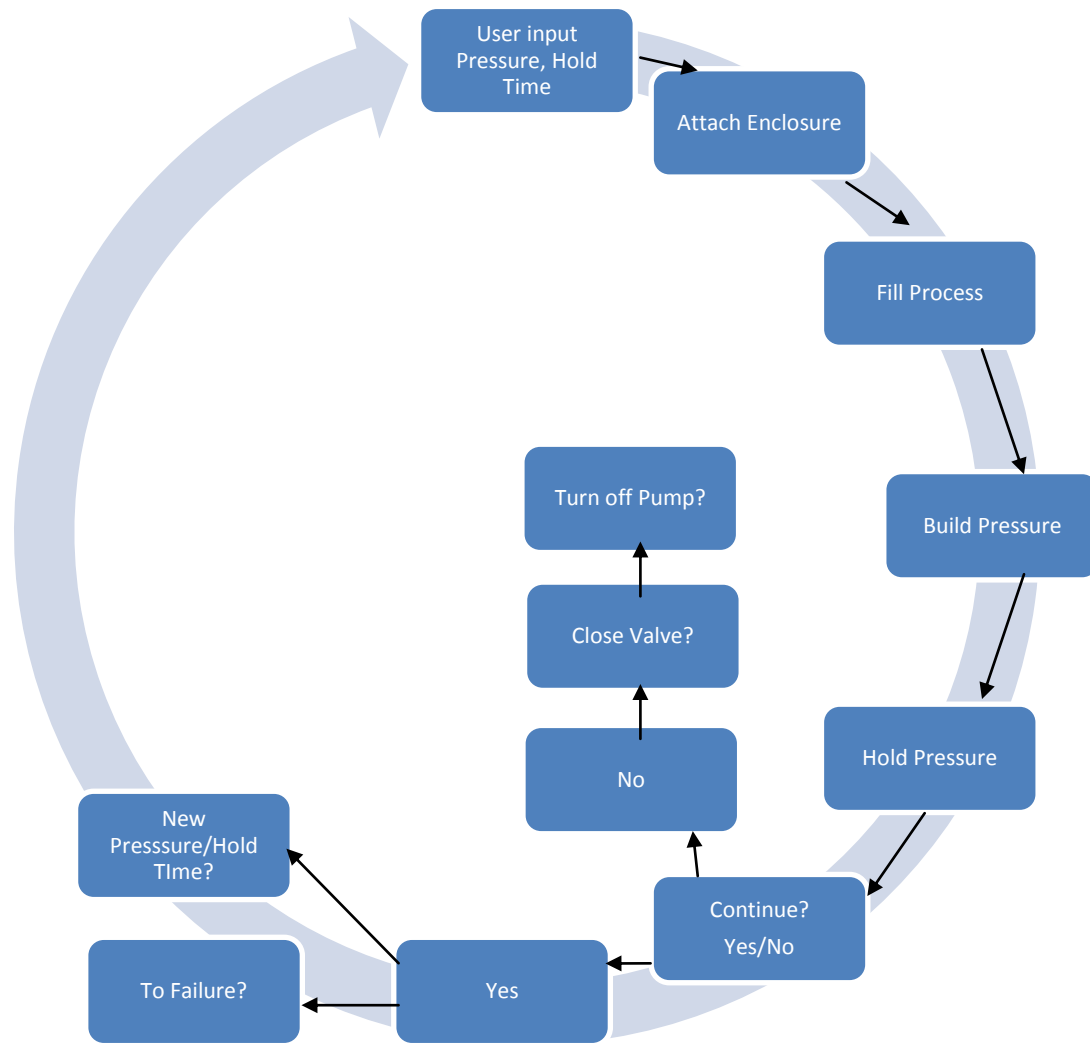
- Customer Requirements (Mitch)
 - Re-phrase “store peak pressure valve” to reflect capture of “spike” pressure valve before failure.
 - Add “Store peak pressure valve”
- Engineering Requirements (Kyle)
 - Get rid of Emergency Stop
 - Replace with E-Stop procedure embedded in controller
 - Re-rank conduit sizing
- HOQ (Brian)
 - Reflect above changes
- **How to the technicians get rid of the air inside the enclosure?**

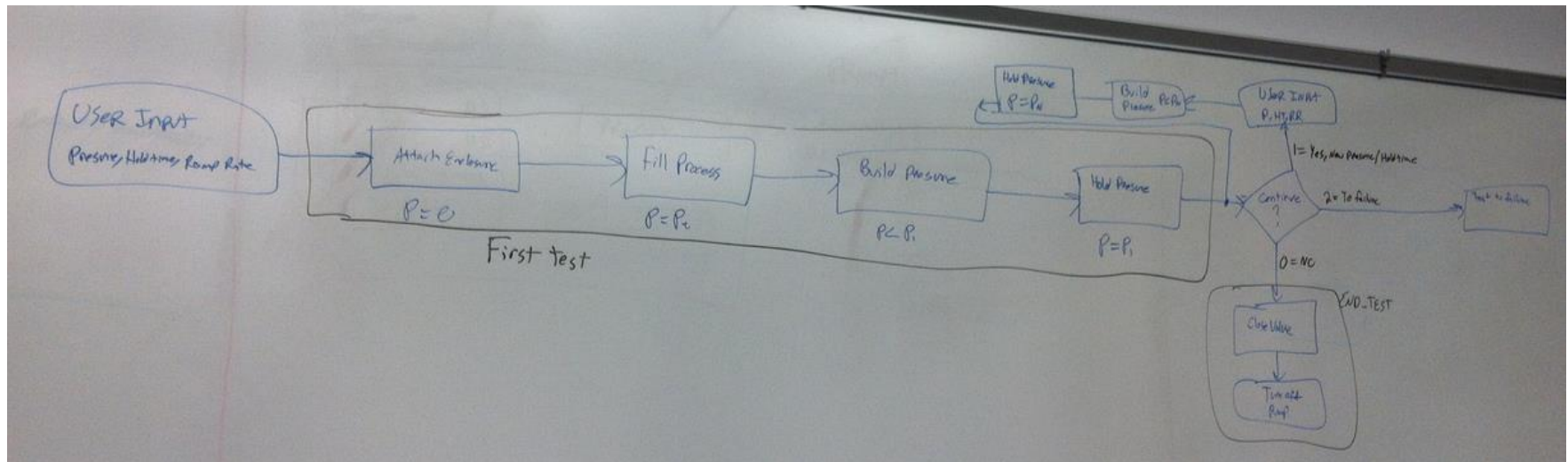


Thoughts:

- Controller:
 - o Prompt
 - Number of pressure values to hold? **0-4**
 - Pressure 1?
 - Hold time for pressure 1?
 - Pressure N?
 - Hold time for pressure N?
 - Take test to failure?





**Action Items:**

- See Above