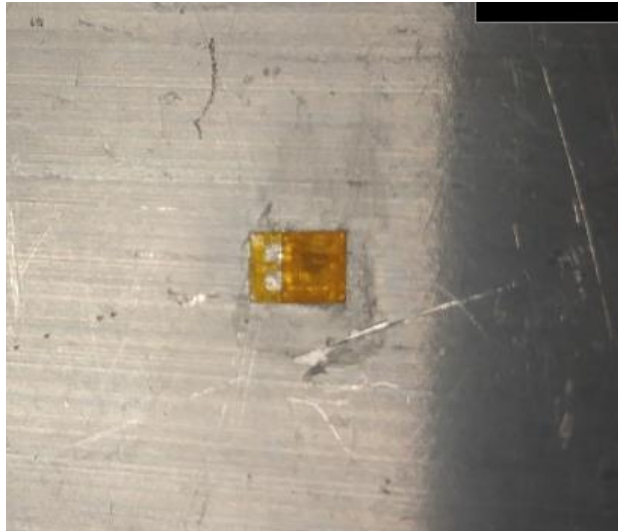


Strain Gauge Soldering

Question: Will we be able to solder directly to the strain gauge pads? How difficult/repeatable?

Method to Test: Try soldering with a very sharp tip and small gauge wire.

Assumptions: Gauge has been mounted and adhesive has been given ample time to cure.



Testing Procedure:

1. Heat up small amount of solder with iron
2. Place wire on gauge pad
3. Solder wire cleanly to pad



Conclusions:

1. Soldering directly to pad is too hot, melts both gauge and adhesive
2. Smaller gauge wire and a sharper tip are needed for this method to work
3. Pre-wired gauges will make it much easier to solder

