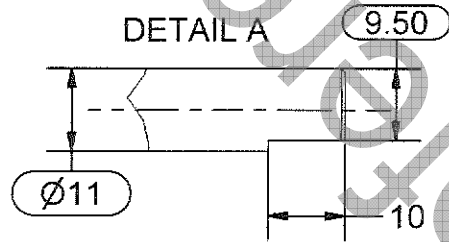
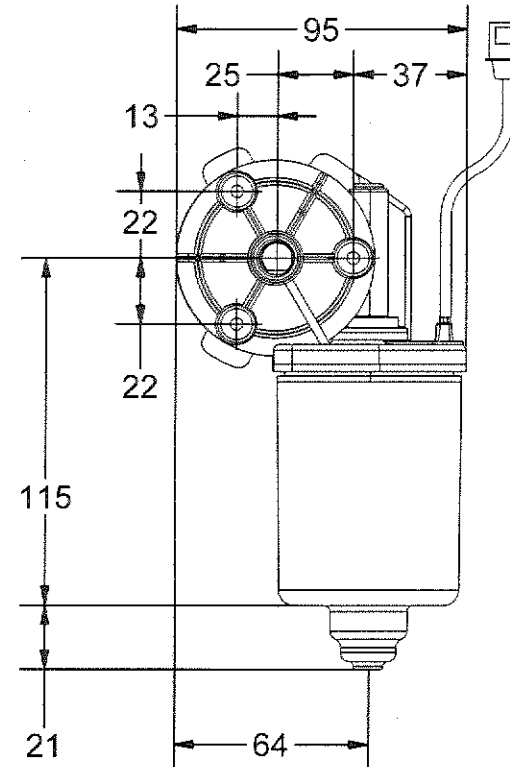
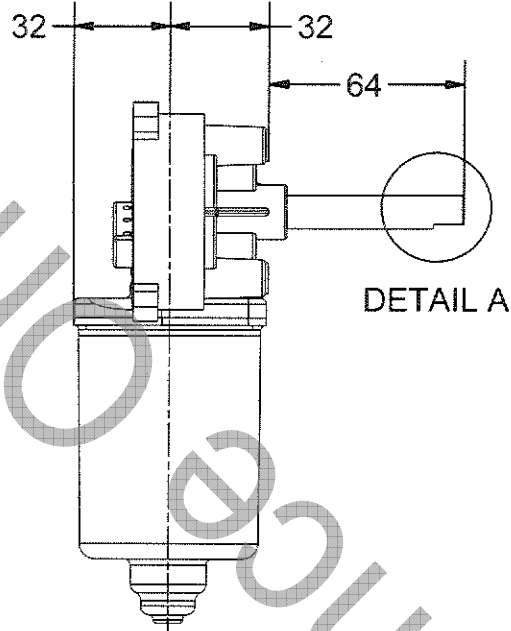
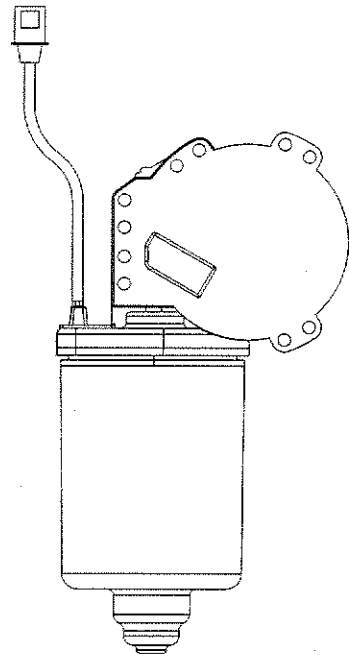


1

2



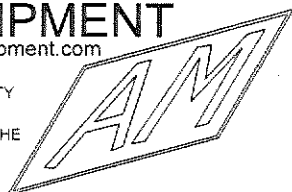
A

A

B

B

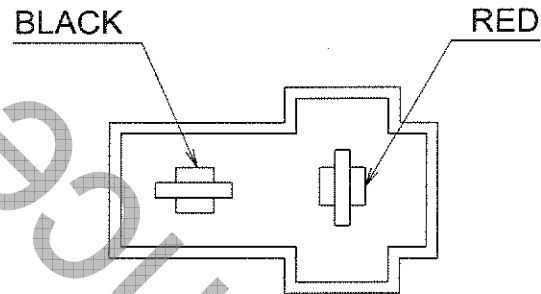
DIMENSIONS ARE IN MILLIMETERS

Project N/A	Designer DB 03 6/13/2001	Check ES 6/13/2001	Approved RL 6/13/2001	MATERIAL SPEC N/A	FINISH SPEC N/A	
OVALS ARE FOR INCOMING INSPECTION CHECKING PROCESSES	TOLERANCES IN INCHES MM 1 PLACE DEC. = N/A ± 0.25 2 PLACE DEC. = ± .01 ± 0.13 3 PLACE DEC. = ± .005 ± 0.08 4 PLACE DEC. = ± .0025 N/A ANGULAR DIM = ± 1' ± 1'	AM EQUIPMENT www.amequipment.com 			Title/Name Motor, Ind, 18Nm, 12V, LH Housing, 11mm Shaft Dia, 64mm Shaft Length, PM Gear	
	DO NOT SCALE DRAWING WORK TO GIVEN DIMENSIONS BREAK SHARP EDGES & REMOVE ALL BURRS EXCEPT AS NOTED	THIS DRAWING IS THE SOLE PROPERTY OF AM EQUIPMENT AND CANNOT BE REPRODUCED IN ANY WAY WITHOUT THE EXPRESS WRITTEN PERMISSION OF AM EQUIPMENT			Part Number 218-1003	Revision 1 1/14/2008

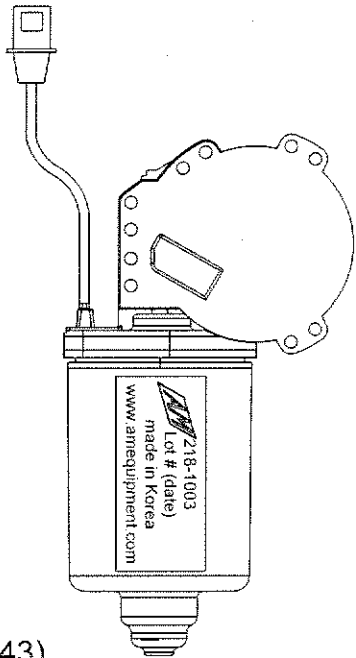
1

2

COUNTER-CLOCKWISE MOTOR SHAFT ROTATION		
DATA POINT	DATA TYPE	VALUE RANGE
NO LOAD	CURRENT (A)	1.7 - 1.4
	SPEED (rpm)	116.2 - 95.1
STALL LOAD	TORQUE (Nm)	21.3 - 17.5
	CURRENT (A)	36.0 - 29.4
PEAK POWER	POWER (W)	60.0 - 49.1
	TORQUE (Nm)	11.1 - 9.1
NOMINAL (PEAK EFFICIENCY)	POWER (W)	36.5 NOMINAL
	SPEED (rpm)	82.1 NOMINAL
	CURRENT (A)	7.0 NOMINAL
	TORQUE (Nm)	4.3 NOMINAL
CLOCKWISE MOTOR SHAFT ROTATION		
DATA POINT	DATA TYPE	VALUE RANGE
NO LOAD	CURRENT (A)	1.6 - 1.3
	SPEED (rpm)	113.5 - 92.9
STALL LOAD	TORQUE (Nm)	20.6 - 16.9
	CURRENT (A)	35.7 - 29.2
PEAK POWER	POWER (W)	55.5 - 45.4
	TORQUE (Nm)	10.5 - 8.6
NOMINAL (PEAK EFFICIENCY)	POWER (W)	34.3 NOMINAL
	SPEED (rpm)	79.6 NOMINAL
	CURRENT (A)	7.4 NOMINAL
	TORQUE (Nm)	4.2 NOMINAL



HOUSING 317-1057 (KET# MG 620042)
 TERMINAL 317-1054 (KET# ST 740254-1)
 MATE HOUSING 317-1056 (KET# MG 610043)
 TERMINAL 317-1055 (KET# ST 730268-1)
 BLACK (+), RED (-) = CW
 RED (+), BLACK (-) = CCW



NOTES:

1. TORQUE BULL GEAR NUT TO 20Nm +2 - 0 WITH WICKING GRADE THREAD LOCKER
2. ARMATURE SHAFT SURFACE FINISH Rz = 1.60um MAX
3. GREASE 15cc GS CALTEX (GS LIPLIX 2) PER MOTOR TO GEAR HOUSING

Project N/A	Designer DB 6/13/2001	Check ES 6/13/2001	Approved RL 6/13/2001
----------------	-----------------------------	--------------------------	-----------------------------

MATERIAL SPEC
N/A

FINISH SPEC
N/A

AM EQUIPMENT
www.amequipment.com

THIS DRAWING IS THE SOLE PROPERTY OF AM EQUIPMENT AND CANNOT BE REPRODUCED IN ANY WAY WITHOUT THE EXPRESS WRITTEN PERMISSION OF AM EQUIPMENT



Title/Name
Motor, Ind, 18Nm, 12V, LH Housing, 11mm Shaft Dia, 64mm Shaft Length, PM Gear

Part Number 218-1003	Revision 1 1/14/2008	Sheet 2 OF 2
-------------------------	----------------------------	-----------------

DIMENSIONS ARE IN: MILLIMETERS

OVALS ARE FOR INCOMING INSPECTION CHECKING PROCESSES

TOLERANCES IN	INCHES	MM
1 PLACE DEC =	N/A	± 0.25
2 PLACE DEC =	± .01	± 0.13
3 PLACE DEC =	± .005	± 0.08
4 PLACE DEC =	± .0025	N/A
ANGULAR DIM =	± 1'	± 1'

DO NOT SCALE DRAWING WORK TO GIVEN DIMENSIONS BREAK SHARP EDGES & REMOVE ALL BURRS EXCEPT AS NOTED