

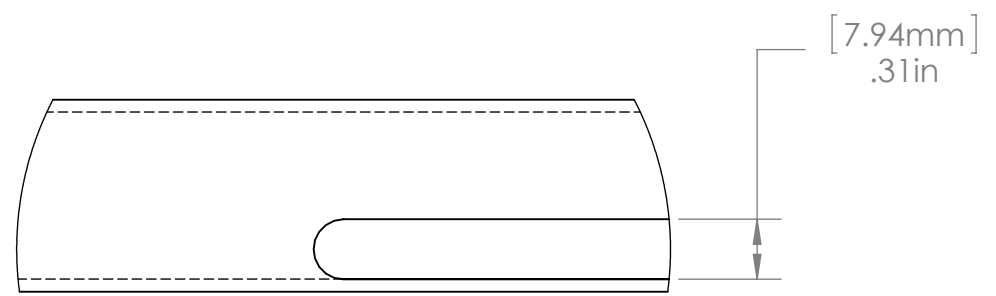
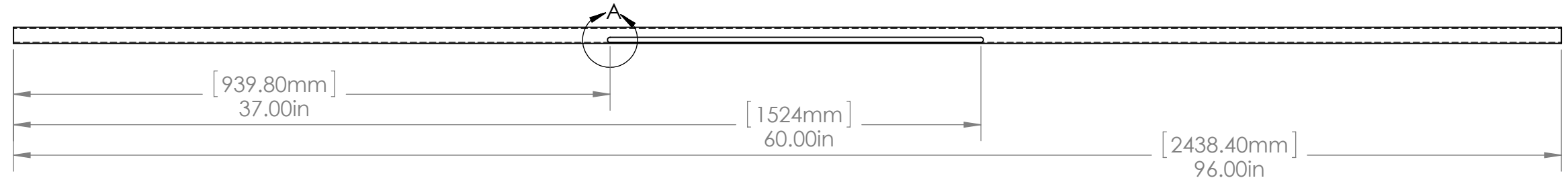
4

3

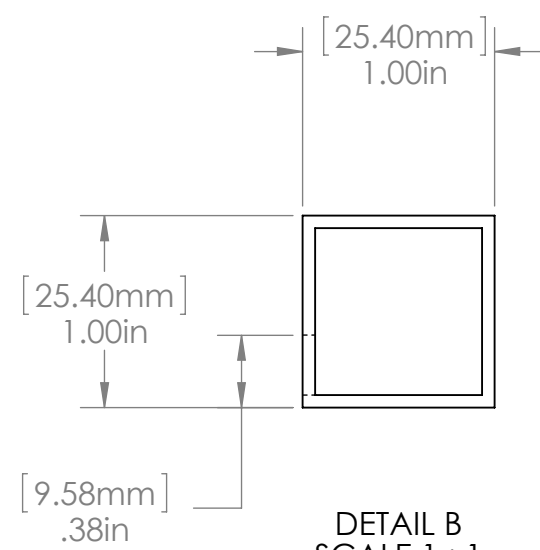
2

1

REVISIONS				
ZONE	REV.	DESCRIPTION	DATE	APPROVED
	A	Created new drawing	1/26/2016	
	B	Changed holes to slot	2/29/2016	



DETAIL A
SCALE 1 : 1



DETAIL B
SCALE 1 : 1

Note: - 5/16in Drill used to bore hole into material, then 5/16 milling bit used to form slot
- Material thickness is 0.065in

PROPRIETARY AND CONFIDENTIAL
THE INFORMATION CONTAINED IN THIS DRAWING IS THE SOLE PROPERTY OF <INSERT COMPANY NAME HERE>. ANY REPRODUCTION IN PART OR AS A WHOLE WITHOUT THE WRITTEN PERMISSION OF <INSERT COMPANY NAME HERE> IS PROHIBITED.

		UNLESS OTHERWISE SPECIFIED:	NAME	DATE		
		DIMENSIONS ARE IN METERS	DRAWN	ZWG	12/5/15	TITLE: Crossbar
		TOLERANCES:	CHECKED			
		X ± 1	ENG APPR.			
		.X ± .1	MFG APPR.			
		.XX ± .01	Q.A.			
		.XXX ± .005	COMMENTS:			SIZE DWG. NO. REV
		ANGLES ± .5°				B LS-108 B
		INTERPRET GEOMETRIC TOLERANCING PER:				SCALE: 1:8 WEIGHT: SHEET 1 OF 1
		MATERIAL				
		Mild Hot Rolled Steel				
NEXT ASSY	Dehydrator box	FINISH				
APPLICATION		DO NOT SCALE DRAWING				

4

3

2

1

B

B

A

A