

4

3

2

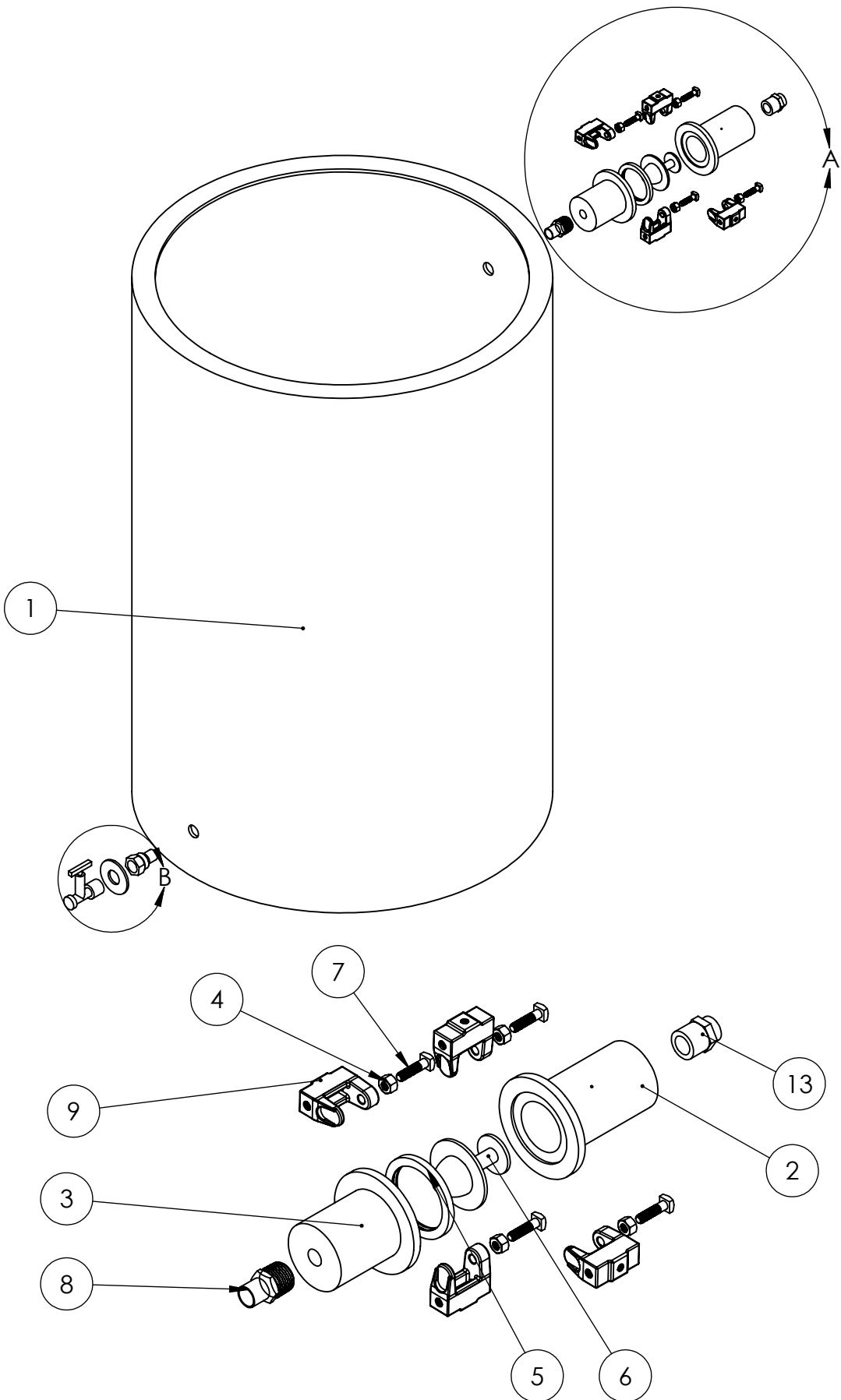
1

B

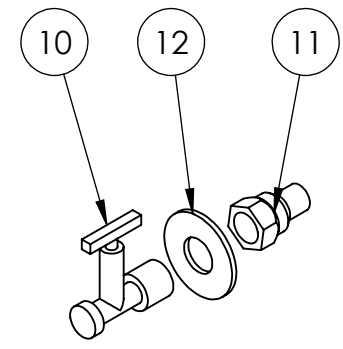
B

A

A



DETAIL A
SCALE 1 : 4



DETAIL B
SCALE 1 : 4

REVISIONS				
ZONE	REV.	DESCRIPTION	DATE	APPROVED
	A	CREATED NEW DRAWING	12/7/2016	KD
	B	UPDATED PARTS TO CURRENT SPECS	4/11/2016	KD

ITEM NO.	PART NUMBER	DESCRIPTION	QTY.
1	WS-301	WATER OUTLET TANK	1
2	WS-302	THERMOSTAT HOUSING INLET	1
3	WS-303	THERMOSTAT HOUSING OUTLET	1
4	WS-304	1/4"-20 NUT	4
5	WS-306	THERMOSTAT GASKET	1
6	WS-307	THERMOSTAT	1
7	WS-308	1/4"-20 BOLT	4
8	WS-309	1/2" MALE COPPER ADAPTER	1
9	WS-311	HOUSING CLAMPS	4
10	WS-312	BRASS HOSE BIBB	1
11	WS-313	1/2" FEMALE COPPER ADAPTER	1
12	WS-314	3/4" ID WASHER	1
13	WS-108	1/2" MALE COPPER ADAPTER	1

NOTES:
 1. ATTACH P/N WS-310 (HOT WATER HOSE) TO WS-309 (MALE COPPER ADAPTER) AND PLACE IN TOP HOLE OF THE BARREL

PROPRIETARY AND CONFIDENTIAL
 THE INFORMATION CONTAINED IN THIS DRAWING IS THE SOLE PROPERTY OF <INSERT COMPANY NAME HERE>. ANY REPRODUCTION IN PART OR AS A WHOLE WITHOUT THE WRITTEN PERMISSION OF <INSERT COMPANY NAME HERE> IS PROHIBITED.

UNLESS OTHERWISE SPECIFIED:		NAME	DATE
DIMENSIONS ARE IN METERS		DRAWN	KD 12/7/15
TOLERANCES:		CHECKED	
X	± 1	ENG APPR.	
.X	± .1	MFG APPR.	
.XX	± .01	Q.A.	
.XXX	± .005	COMMENTS:	
ANGLES	± .5°		
INTERPRET GEOMETRIC TOLERANCING PER:			
MATERIAL			
FINISH			
NEXT ASSY	USED ON		
APPLICATION			
DO NOT SCALE DRAWING			

TITLE:
WATER OUTLET ASSEMBLY

SIZE **B** DWG. NO. **WS-300** REV **B**

SCALE: 1:16 WEIGHT: SHEET 1 OF 1