

Team #:	P17027	Team Name:	Starfish Gripper
Date:	4/12/2017 18:09	Document Owner:	Giordan Meyer
Revision #:	2		

Subsystem/ Function/ Feature Name:	Capture Rate Reliability	ER6 Test Plan
Date of Test:		
Performed By:		
Tested By:		

Concluded Condition of meeting Engineering Specification:

I. TESTING SPECIFICATION

Specification Number	Importance	Source	Function	Specification (Metric)	Unit of Measure	Marginal Value	Ideal Value	Comments/Status
ER6	1	CR6	Operation	Successful Capture Rate	%	75	100	

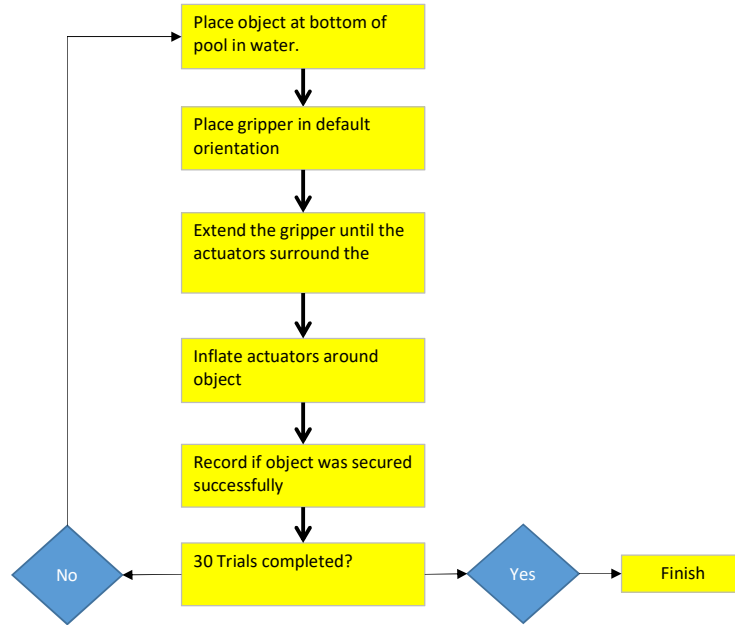
II. EQUIPMENT REQUIRED

Specification Number	Equipment or Instrumentation required
ER6	Completed robot, test tank, control object, laptop

III. DATA COLLECTION STRATEGY

Specification Number	Data acquisition strategy
ER6	The goal of this test is to determine how many successful captures are performed per 30 attempts. The gripper will be placed in a default orientation, defined as the gripper facing down towards the object, and will be held in place by the operator. All results are observed by operators, and recorded in spreadsheet form.

III. TESTING FLOWCHART



IV. RAW DATA ACQUISITION

	Trial	Object Captured Successfully	Object Not Captured	Comments
	1			
	2			
	3			
	4			
	5			
	6			
	7			
	8			
	9			
	10			
	11			
	12			
	13			
	14			
	15			
	16			

Capture Rate Testing

17			
18			
19			
20			
21			
22			
23			
24			
25			
26			
27			
28			
29			
30			
Total:			

V. RESULTS

VI. CONCLUSION