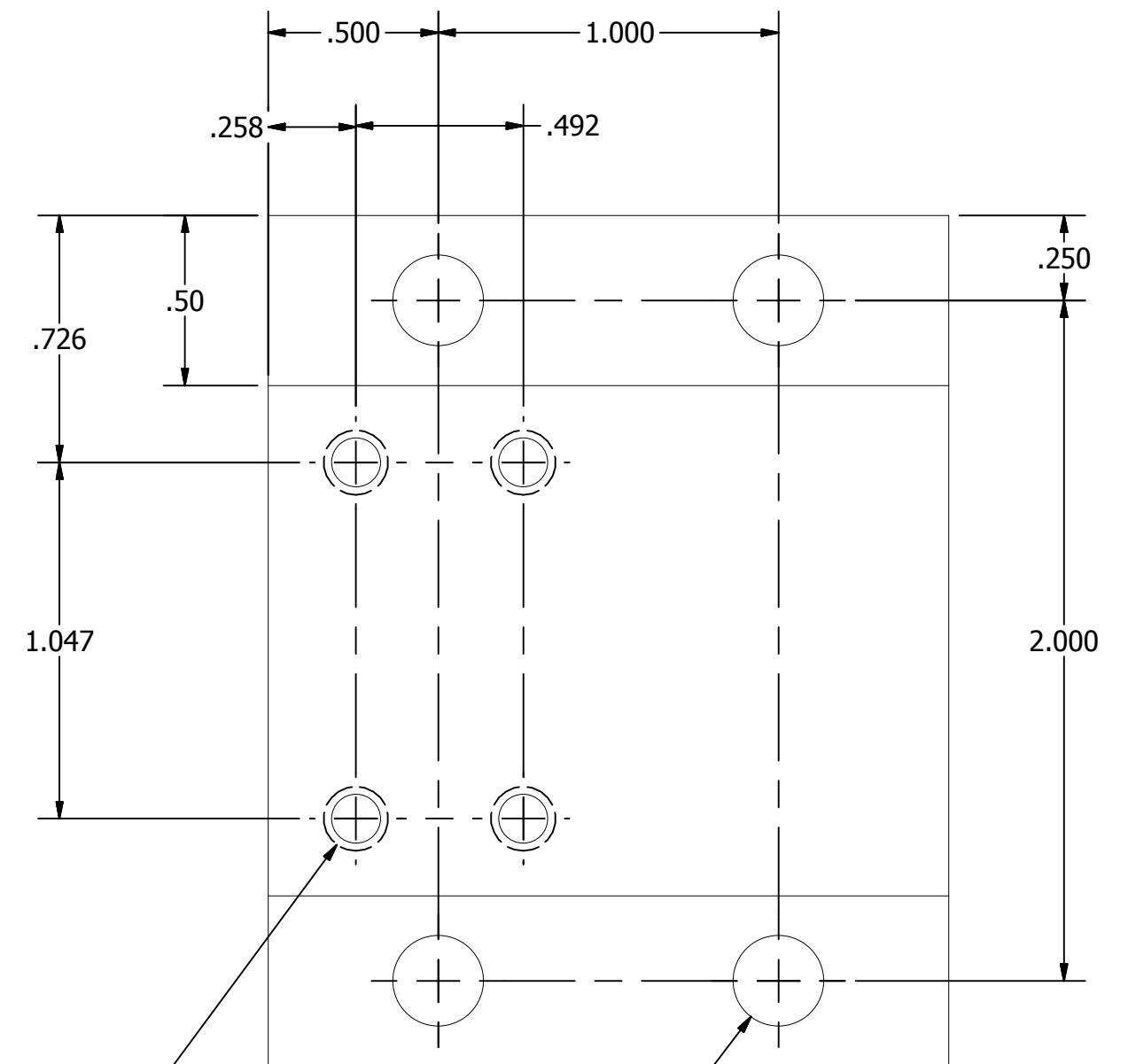
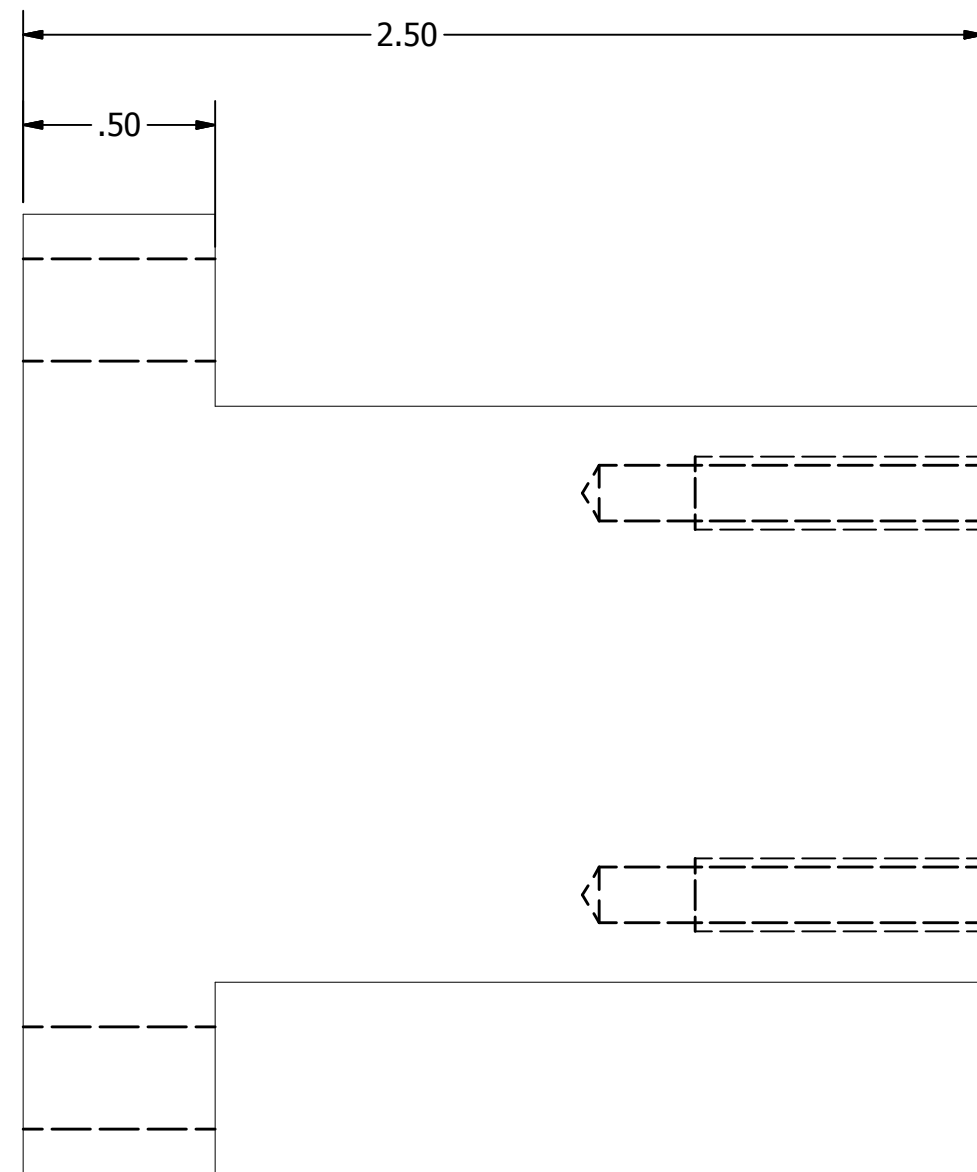
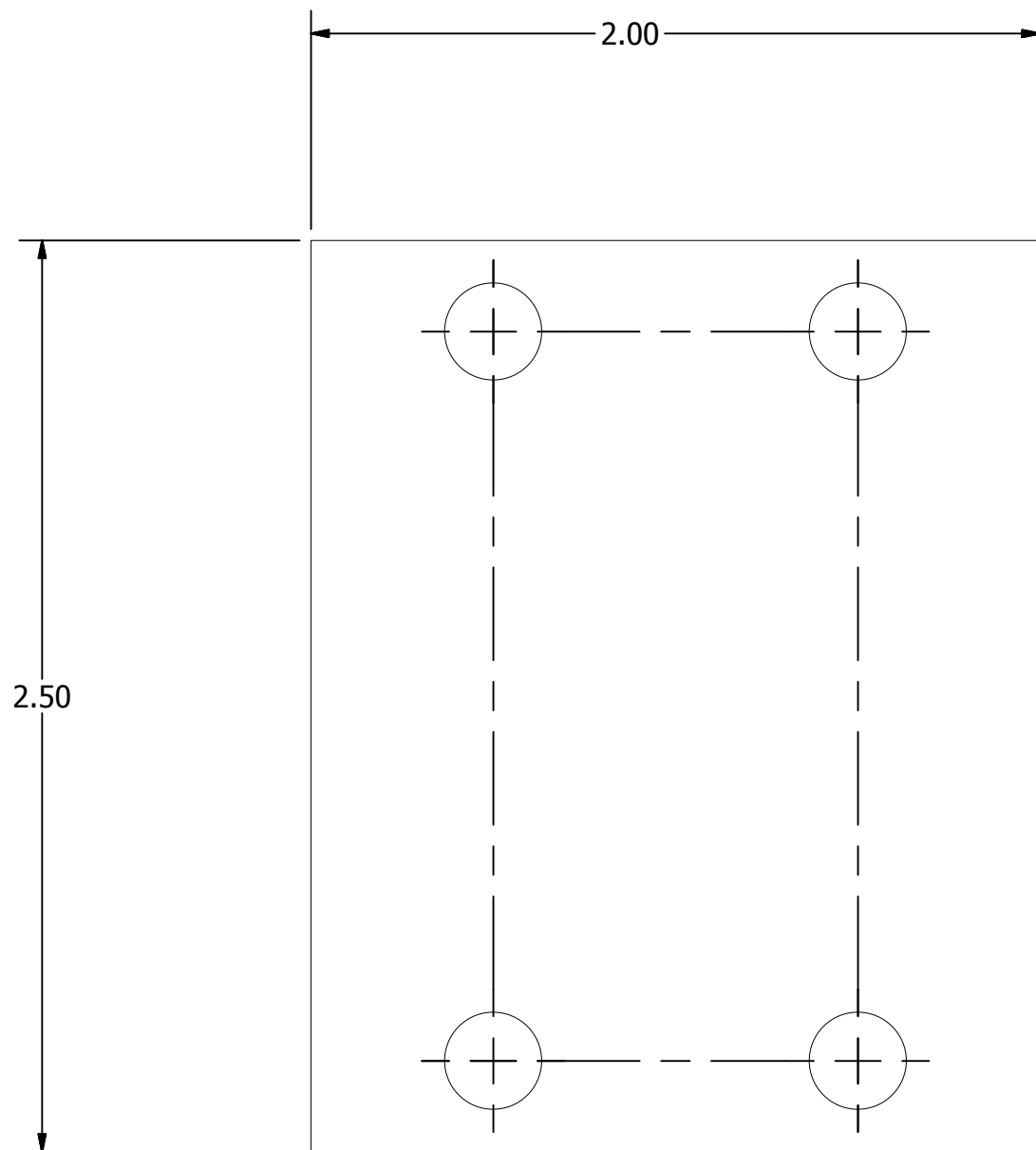


NOTES

- 1.0 GEOMETRY, DIMENSIONS AND TOLERANCES TO BE INTERPRETED IN ACCORDANCE WITH ASME 14.5-2009.
- 2.0 MATERIAL: ALUMINUM ALLOY PER UNS A96061-T6.
- 3.0 FINISH: ALUMINUM PRETREATMENT: CHEMICAL CONVERSION COATING PER MIL-DTL-5541F, CLASS 3, TYPE II (CLEAR), ROHS COMPLIANT.
- 4.0 PART TO BE FREE OF BURRS AND SHARP EDGES.
- 5.0 IDENTIFICATION: INDIVIDUALLY BAG, TAG OR MARK WITH EACH PART NUMBER AND REVISION WITH INDELIBLE INK.

REVISION HISTORY			
REV	DESCRIPTION	DATE	APPROVED
A	RELEASE FOR PRODUCTION	9/14/2017	CLH



4x 10-24 UNC - 2B  $\nabla$  .75

4x  $\varnothing$ .266 THRU  
[1/4-20]

UNLESS OTHERWISE SPECIFIED

TOLERANCES		
LINEAR	ANGULAR	
.XX +/- .02	0° +/- .30°	
.XXX +/- .005		

DIMENSIONS IN INCHES  
& APPLY AFTER FINISH

DRAWN Heise	9/4/2017	P17521 - RIT/KODAK	
CHECKED		TITLE	
QA		TOGGLE CLAMP RISER	
MFG		SIZE C	DWG NO 20010-1325-01_RevB
APPROVED		SCALE	REV A
		SHEET 1 OF 1	