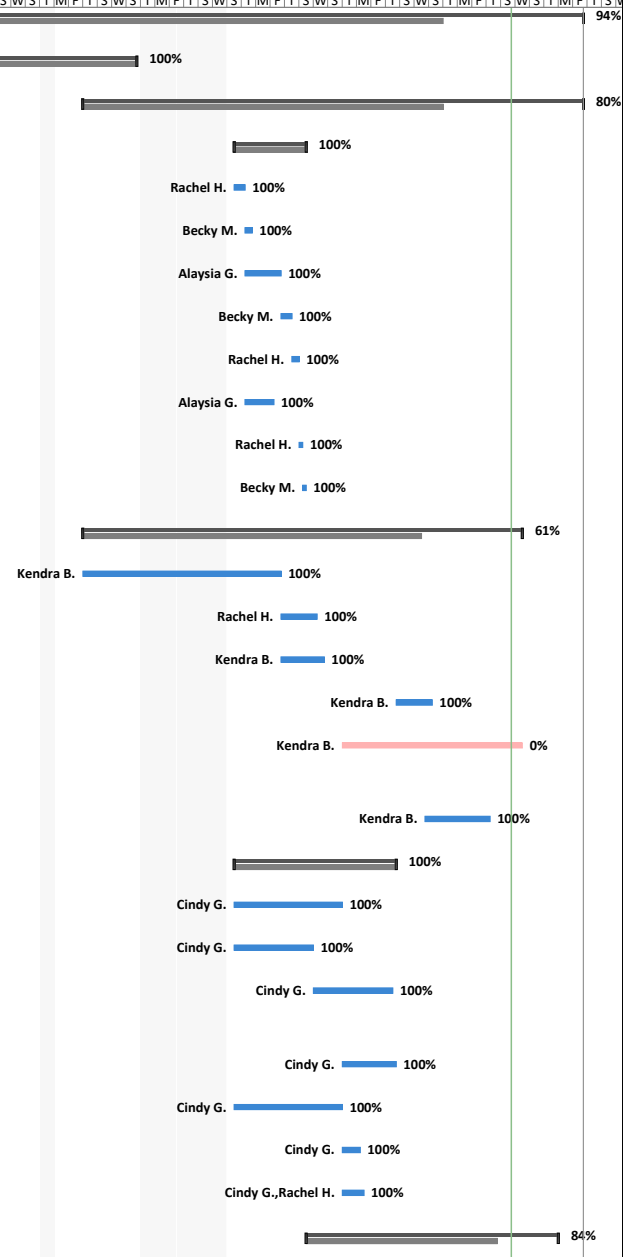


Team #: 18280	Team Name: Hot Wheelz Hot Seniorz
Date: 3/28/17	Document Owner: Rachel Heise
Revision #: 5	

ID	Task Mod	Task Name	Duration	Start	Finish	Actual Finish	Predecessor	Resource Names	Aug 27, 17	Sep 10, 17	Sep 24, 17	Oct 8, 17	Oct 22, 17	Nov 5, 17	Nov 19, 17	Dec 3, 17	Dec 17, 17	Dec 31, 17	Jan 14, 18	Jan 28, 18	Feb 11, 18	Feb 25, 18	Mar 11, 18	Mar 25, 18	Apr 8, 18	Apr 22, 18	
1		MSD Test Bench Project	201 days	Sat 9/2/17	Mon 4/23/18	NA																					
2	✓	MSD I	104 days	Sat 9/2/17	Wed 12/20/17	Wed 12/20/17																					
102		MSD II	112 days	Tue 12/5/17	Mon 4/23/18	NA																					
103	✓	Build Cart	20 days	Tue 1/16/18	Mon 2/5/18	Mon 2/5/18																					
104	✓	Purchase cart materials	3 days	Tue 1/16/18	Fri 1/19/18	Fri 1/19/18	94,2	Rachel H.																			
105	✓	Replace wheels on cart	2 days	Fri 1/19/18	Sun 1/21/18	Sun 1/21/18	104	Becky M.																			
106	✓	Cut divider walls to size	10 days	Fri 1/19/18	Mon 1/29/18	Mon 1/29/18	104	Alaysia G.																			
107	✓	Mill slot on divider material	3 days	Mon 1/29/18	Thu 2/1/18	Thu 2/1/18	106	Becky M.																			
108	✓	Mount center & lateral dividers	2 days	Thu 2/1/18	Sat 2/3/18	Sat 2/3/18	107	Rachel H.																			
109	✓	Drill holes in shelf material	8 days	Fri 1/19/18	Sat 1/27/18	Sat 1/27/18	104	Alaysia G.																			
110	✓	Mount shelves	1 day	Sat 2/3/18	Sun 2/4/18	Sun 2/4/18	108,109	Rachel H.																			
111	✓	Mount shelf brackets	1 day	Sun 2/4/18	Mon 2/5/18	Mon 2/5/18	110	Becky M.																			
112		Build Electrical Circuits	95 days	Tue 12/5/17	Fri 4/6/18	NA																					
113	✓	Prototyping of circuits	28 days	Tue 12/5/17	Mon 1/29/18	Mon 1/29/18	96	Kendra B.																			
114	✓	Order components for circuits	10 days	Mon 1/29/18	Thu 2/8/18	Thu 2/8/18	113	Rachel H.																			
115	✓	Connect to Rpi through remote interface	12 days	Mon 1/29/18	Sat 2/10/18	Sat 2/10/18	113	Kendra B.																			
116	✓	Wire sensor circuits	10 days	Fri 3/2/18	Mon 3/12/18	Mon 3/12/18	117	Kendra B.																			
117	⚠	Test interfacing between sensor circuits and Rpi	50 days	Thu 2/15/18	Fri 4/6/18	NA	114,120	Kendra B.																			
118	✓	Put shutdown circuit on bench	18 days	Sat 3/10/18	Wed 3/28/18	Wed 3/28/18	103,114,128	Kendra B.																			
119	✓	Build programming systems	45 days	Tue 1/16/18	Fri 3/2/18	Fri 3/2/18																					
120	✓	Program raspberry pi	30 days	Tue 1/16/18	Thu 2/15/18	Thu 2/15/18	101	Cindy G.																			
121	✓	Physically connect CANbus	22 days	Tue 1/16/18	Wed 2/7/18	Wed 2/7/18	101	Cindy G.																			
122	✓	Write program for CANbus to read input and transmit it wirelessly to GUI	22 days	Wed 2/7/18	Thu 3/1/18	Thu 3/1/18	121	Cindy G.																			
123	✓	Implement DHCP (IP addresses)	15 days	Thu 2/15/18	Fri 3/2/18	Fri 3/2/18	101,120	Cindy G.																			
124	✓	Implement GUI	30 days	Tue 1/16/18	Thu 2/15/18	Thu 2/15/18	90,101	Cindy G.																			
125	✓	Data validation on GUI	5 days	Thu 2/15/18	Tue 2/20/18	Tue 2/20/18	124	Cindy G.																			
126	✓	Beta test GUI	6 days	Thu 2/15/18	Wed 2/21/18	Wed 2/21/18	124	Cindy G.,Rachel H.																			
127		Validate Test Bench	70 days	Mon 2/5/18	Mon 4/16/18	NA																					



Team #: 18280	Team Name: Hot Wheelz Hot Seniorz
Date: 3/28/17	Document Owner: Rachel Heise
Revision #: 5	

ID	Task Mode	Task Name	Duration	Start	Finish	Actual Finish	Predecessor	Resource Names	Aug 27	Sep 10	Sep 24	Oct 8	Oct 22	Nov 5	Nov 19	Dec 3	Dec 17	Dec 31	Jan 14	Jan 28	Feb 11	Feb 25	Mar 11	Mar 25	Apr 8	Apr 22
128	✓	Hot Wheelz system testing on bench	51 days	Mon 2/5/18	Wed 3/28/18	Wed 3/28/18	103																			
129		Attach tractive system components to test bench	5 days	Fri 4/6/18	Wed 4/11/18	NA	103,112,119	Alaysia G.,Becky M.,Cindy G.,Kendra B.,Rachel H.																		
130		Run power through system	5 days	Wed 4/11/18	Mon 4/16/18	NA	129	Cindy G.,Kendra B.																		
131		Closeout Activities	96 days	Wed 1/17/18	Mon 4/23/18	NA																				
132	⬇	Ensure customer & eng. requirements are met	5 days	Mon 4/16/18	Sat 4/21/18	NA	127	Rachel H.																		
133		Closeout risks	2 days	Sat 4/21/18	Mon 4/23/18	NA	132	Alaysia G.																		
134	⬇	Finalize documentation for use of test bench	5 days	Mon 4/16/18	Sat 4/21/18	NA	103,112,127	Alaysia G.,Becky M.																		
135	✓	Determine storage of test bench	5 days	Wed 1/17/18	Mon 1/22/18	Mon 1/22/18		Rachel H.																		