

MSD Team P19345
 Term 2191 - MSD II Detailed Plan

Introduction:

This report outlines the semester schedule and plan for MSD Team P19345 to complete in MSD II. This report includes all design, build, test, and integration tasks that will be completed to support the successful completion of the model railroad project. Durations and task assignments will be included as all team members will be involved with the project. Additionally, one team member, Marianna Palacios, will be completing the course MSD II remotely. Due to the long projection of this plan, certain tasks in later phases may change and additional tasks may be added in.

Semester Schedule Outline:

Rubric -- Expectations		65%	25%	10%
Weight	Phase	Deliverables (grade reflects both quantity and quality)	Process	Individual Team Member Behavior
15%	Subsystem Level Prep (wk 1-2)	Phase-specific artifacts: <ul style="list-style-type: none"> MSD II post-mortem MSD II project plan (rev 2) Status long-lead time purchases Test plan (rev 2) and test bench setup Problem tracking in place 	<ul style="list-style-type: none"> Use of phase-specific tools to achieve project outcomes Customer is appropriately engaged Requirements traceability: tests => components => subsystems => system => customer Problem solving & risk assessment Project planning and tracking: consistent use of up-to-date plan Use of feedback Documentation Execution of demo/ review 	<ul style="list-style-type: none"> Adherence to team norms and values Completion of peer reviews Professional behavior Effective communication Response to feedback Individual 3-week plan that maps to team-level vision Use of logbook or other approved means of logging individual work
25%	Subsystem Level Build & Test (wk 3-6)	Phase-specific artifacts: <ul style="list-style-type: none"> Subsystem Functional Demo: test verification (performance vs. requirements) and documentation Problem tracking: outstanding items and actions Additional project-specific deliverables as appropriate 	<ul style="list-style-type: none"> Use of phase-specific tools to achieve project outcomes Customer is appropriately engaged Requirements traceability: tests => components => subsystems => system => customer Problem solving & risk assessment Project planning and tracking: consistent use of up-to-date plan Use of feedback Documentation Execution of demo/ review 	<ul style="list-style-type: none"> Adherence to team norms and values Completion of peer reviews Professional behavior Effective communication Response to feedback Individual 3-week plan that maps to team-level vision Use of logbook or other approved means of logging individual work
30%	Systems Level Build, Test, & Integrate (wk 7-10)	Phase-specific artifacts: <ul style="list-style-type: none"> Close out any subsystem-level issues that were outstanding after Phase 6 Full Integrated System Demo with Customer: test verification(performance vs. requirements for system) and documentation Update problem tracking: outstanding items and actions 75% Technical Paper complete Additional project-specific deliverables as appropriate 	<ul style="list-style-type: none"> Use of phase-specific tools to achieve project outcomes Customer is appropriately engaged Requirements traceability: tests => components => subsystems => system => customer Problem solving & risk assessment Project planning and tracking: consistent use of up-to-date plan Use of feedback Documentation Execution of demo/ review 	<ul style="list-style-type: none"> Adherence to team norms and values Completion of peer reviews Professional behavior Effective communication Response to feedback Individual 3-week plan that maps to team-level vision Use of logbook or other approved means of logging individual work
30%	Verification & Validation (wk 11-15)	Phase-specific deliverables: <ul style="list-style-type: none"> Prototype handed-off to Customer (with appropriate documentation), and Customer satisfaction documented Testing complete and fully documented Technical Paper complete and submitted Poster complete and submitted Lightning Talk Presentation All project documentation complete and uploaded to website Gate Review deliverables Workspace/tools cleaned and returned to Design Center, ME Shop, EE SD Lab, etc. 	<ul style="list-style-type: none"> Use of phase-specific tools to achieve project outcomes Customer is appropriately engaged Requirements traceability: tests => components => subsystems => system => customer Problem solving & risk assessment Project planning and tracking: consistent use of up-to-date plan Use of feedback Documentation Execution of demo/ review Reflection: objective evaluation of successes and failures, team self-assessment against norms & values from MSD I, lessons learned Participation in final presentation and poster session(s) 	<ul style="list-style-type: none"> Adherence to team norms and values Completion of peer reviews Professional behavior Effective communication Response to feedback Individual 3-week plan that maps to team-level vision Use of logbook or other approved means of logging individual work

MSD Team P19345
 Term 2191 - MSD II Detailed Plan
Subsystem Level Prep (wk 1-2)

The below image displays what tasks will be completed within the first two weeks of MSD II. Durations with start and end dates, team member assignments, and a visual Gantt chart are included to show task dependencies.



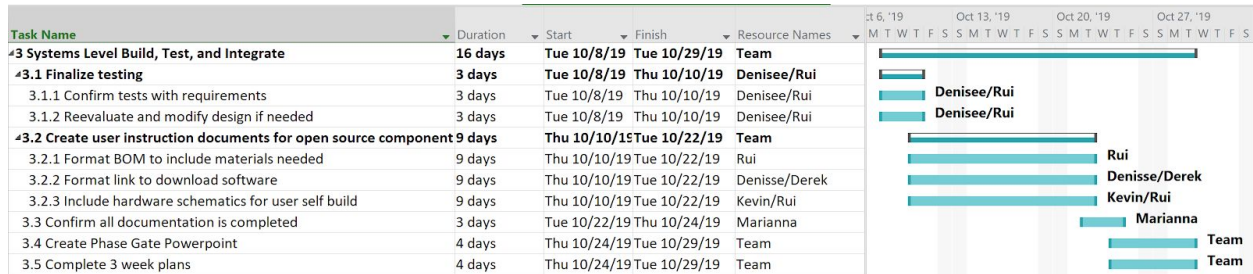
Subsystem Level Build & Test (wk 3-6)

The below image displays what tasks will be completed within the weeks 3-6 of MSD II. Durations with start and end dates, team member assignments, and a visual Gantt chart are included to show task dependencies. For testing, team member assignments to complete the test are visible in each testing tab. Denisse and Rui will be the main contacts for testing.



Systems Level Build, Test and Integrate (wk 7-10)

The below image displays what tasks will be completed within the weeks 7-10 of MSD II. Durations with start and end dates, team member assignments, and a visual Gantt chart are included to show task dependencies. A large component of this phase will be completing user instructions and any open source documentation. The tasks mentioned in this phase may be altered due to the long time projection out of these tasks.



Verification and Validation (wk 11-15)

The below image displays what tasks will be completed within the weeks 11-15 of MSD II. Durations with start and end dates, team member assignments, and a visual Gantt chart are included to show task dependencies. A large component of this phase will be to complete user testing. This phase also will be used to finalize the MSD formal report and poster.

